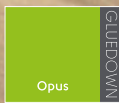




Karndean
COMMERCIAL

DESIGN IS AN
ENDLESS JOURNEY



COMMERCIAL FLOORING

karndeancommercial.com

GLUEDOWN LVT FLOORING

Elevate your project with our premium gluedown luxury vinyl flooring (LVT) from Karndean. This flooring solution offers maximum design flexibility, allowing you to create intricate, custom layouts with ease. Perfect for both residential and commercial spaces, our gluedown LVT provides a durable and long-lasting finish, ensuring your flooring stays securely in place.

With gluedown installation, each piece is firmly adhered, offering enhanced stability and precision. Available in a variety of designs, it's easy to cut and fit for unique layouts, borders, and zoning. At 2.5mm thick, Karndean gluedown LVT seamlessly integrates with other flooring types, while its tough wear layer provides protection against daily wear and tear.



Individually replaceable

Should part of the floor become damaged, simply lift and replace the plank with a new one, giving you peace of mind throughout the lifetime of your floor.



No expansion gap required

Can be fitted tight against straight or curved walls and fixtures. No need to leave any expansion gap.



Laying possibilities

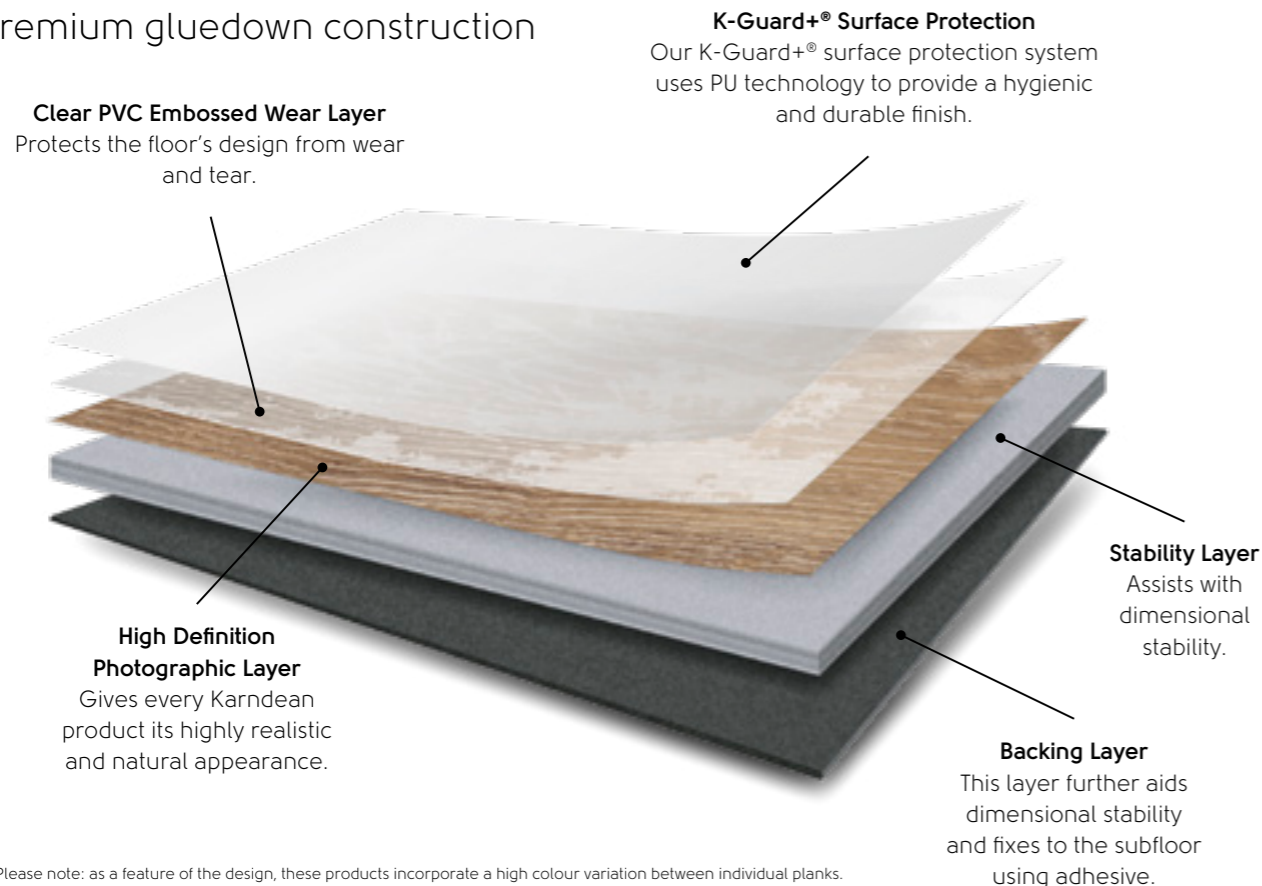
It's not just the design you choose, but how you lay it. Our gluedown format gives you the ability to add your individual style and add intrigue to any room with a multitude of creative laying patterns.



Custom layouts

For stylish aesthetic or functional zoning purposes, offering virtually limitless possibilities.

Premium gluedown construction



* Please note: as a feature of the design, these products incorporate a high colour variation between individual planks.

RANGE HUB

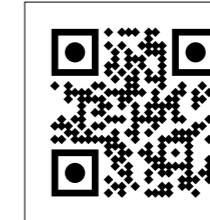


Opus offers a modern, contemporary feel with designs in a wide range of colours to complement any commercial space. From the cool limed tones of Walnut to the warm, rich tones of Oak, the Opus range delivers simplicity and style for commercial interiors. The collection of stones feature fresh, contemporary natural stone effects, offering a clean, modern look. With options like the pale tones of Limestone and the bold, industrial feel of Concrete, the Opus collection brings a stylish, up-to-date touch to any commercial design scheme.



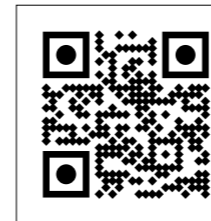
BIM Store objects

Render a Opus floor into your project.



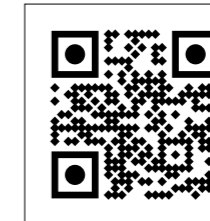
Commercial warranty brochure

Find out why our commercial warranty stands out from the rest.



Commercial Floorstyle visualiser tool

Visualise Karndean LVT flooring in your project.



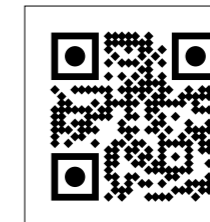
Environmental Product Declaration

Independently verified EPDs. View, download & compare LCAs.



Explore the range online

View the full range of Opus products on our website.



Technical resources

View product, technical and performance information and tools.

Environmental accreditations

The Opus range receives a GreenRate™ Level 'A' rating for quality sustainable building material, and LCARate Silver certification, recognising commitment to safeguarding the planet's biodiversity, and maintaining environmentally friendly manufacturing processes.



All Karndean range and format credentials are at our certification policy level – please check for the current certification status.

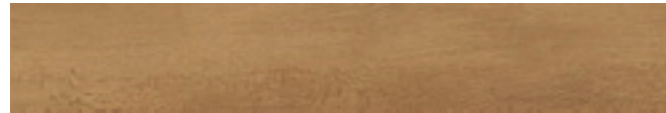
OPUS WOOD DESIGNS

The Opus collection brings you a fresh, modern feel with a wide range of tones and mix of surface finishes. Combined with clean lines, you can achieve a sense of simplicity and visual space whatever your colour scheme.

Gluedown: 914.4mm x 152.4mm (36.0" x 6.0")**



Palleo **WP312**



Aurum **WP315**



Bleached Grey Walnut **WP329 | WP329-SR**



Ignea **WP313 | WP313-SR**



Rubra **WP316**



Grano **WP311**



Talpa **WP319 | WP319-SR**



Carbo **WP318 | WP318-SR**

Gluedown: 4219.2mm x 228.6mm (48.0" x 9.0")



Columba **WP422**



Niveus **WP411 | WP411-SR**



Avena **WP423**



Rubesco **WP421**



Magna **WP413**



Argen **WP414**

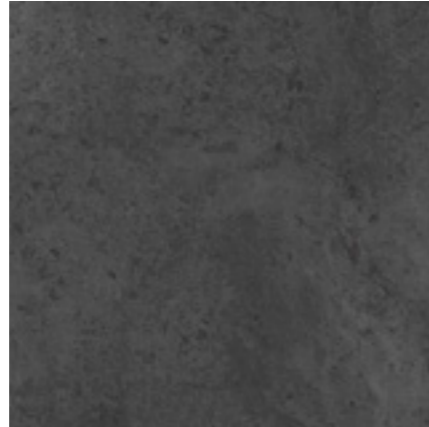
OPUS STONE DESIGNS

The Opus collection includes a range of contemporary stone effects available in some of the largest tile sizes. The smoother surface and range of colours create a clean, modern look to suit most spaces.

Gluedown: 457.2mm x 457.2mm (18.0" x 18.0")



Luna SP111



Ombra SP114



Nero SP115

Gluedown: 457.2mm x 609.6mm (18.0" x 24.0")***



Terra SP212



Available in
P4
Slip Rating

Urbus SP213 | SP213-SR



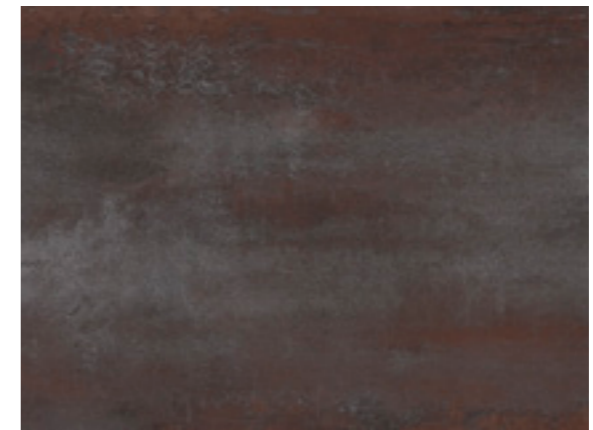
Mico SP211



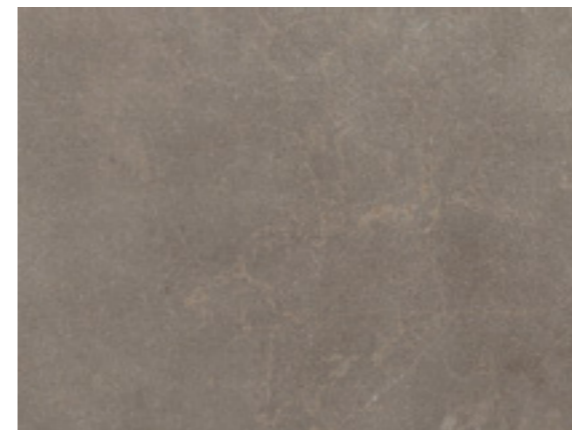
Forma SP214



Argento SP217*



Ferra SP215



Fumo SP216*

GLUEDOWN



Thickness: 2.5mm

Wear layer: 0.5mm

Bevel: Micro

Box quantity: 3.345m² / 16 tiles, ***12 tiles

* Please note: as a feature of this design, these products incorporate a high variation between individual planks.



Rubesco WP421



Bleached Grey Walnut WP329 | WP329-SR



Grano WP311 | Carbo WP318 | WP318-SR

WHY KARNDEAN?

All the benefits of Karndean Designflooring...

From large commercial environments to residential projects, at Karndean Designflooring, our vast range of products offer the essential benefits that make our luxury vinyl tiles and planks the perfect choice for any flooring space.

The Opus collection includes some of the most contemporary designs available in trendy larger scale planks and tiles. The wider planks are perfect in larger spaces and come in a wide range of tones.

Add brightness to a space with Opus's collection of light toned wood planks and tiles or add visual interest with the dark charcoal tones and silvery grain details of the Argen planks.



Realistic wood and stone designs

Inspired by nature, our products are designed in-house and realistically replicate the look and feel of real wood and stone materials.



Warranty

Karndean floors are backed by our residential lifetime* and 10-15 year commercial warranties.



Easy to clean and look after

A sweep and mop with Karndean Clean is all you need to keep your Karndean floor looking great.



Water resistant

Karndean's water resistant floors stand up to spills of all sizes and won't swell, crack or warp when wet.



Durable

Compared to other flooring alternatives, Karndean gives you the look and feel of natural products but with the durability and resilience of luxury vinyl.



K-Guard+®

We use K-Guard+® surface technology for scuff and stain resistance ensuring there is no need to apply an additional surface treatment following installation.



Hygienic

Unlike carpets, our floors don't hold dust, dirt, pollen or other allergens.



Compatible with underfloor heating

For added warmth, our flooring is perfectly suitable for underfloor heating systems up to 27°C.



Comfortable underfoot

Our products are softer and warmer underfoot than natural wood and stone flooring.



Quiet compared to other hard floors

Karndean is quieter underfoot compared to most hard flooring alternatives.



Kid friendly

Karndean floors offer children a safe and comfortable space to play, and parents a durable, easy-to-clean surface.



Pet friendly

From muddy paw prints to household accidents and anything in-between, Karndean's low-maintenance floors are designed with pets in mind.



Environmentally friendly

All Karndean floors are 100% recyclable and environmentally friendly.



Resists indentation

All Karndean floors stand up to the impact of day to day life.

FEELING INSPIRED?

We have a variety of tools available to help you achieve the look you desire for your project:

Floorstyle Visualiser

See what our flooring designs look like in a variety of virtual commercial settings – or upload photos to see the designs in the actual space for your project. Floorstyle is an easy way to compare designs, experiment with lay patterns, and decide on the perfect look.

Karndean brochures

Our extensive suite of brochures are created to inspire and educate. An ideal take-home, each brochure talks through the key benefits of a Karndean floor, supported by large, beautiful room-shot images.

Your partner in success

We understand the importance of reliable support, which is why we offer more than just exceptional products. Our dedicated Business Managers, Customer Service, and Technical Support teams are always available to provide assistance. With Australian based stock and a commitment to excellent service, we ensure that our partners have everything they need to succeed, from initial inquiries to after-sales support.

Sample swatch

A room has many visual elements that all interact with each other to create a sense of space. Our sample service puts the floor right in your customer's hands, enabling them to test and compare the designs, and create mood boards to complete their interior design project.



You can also download CAD files through Floorstyle.

Technical resources

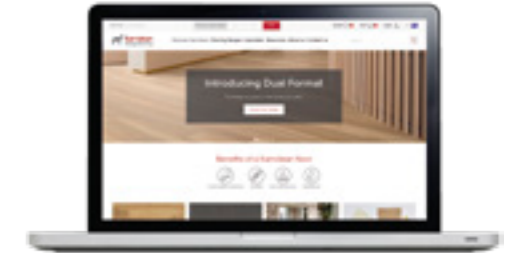
This section of our website contains everything you need from a regulatory and compliance perspective to specify Karndean's commercial LVT flooring.
karndeancommercial.com/en-au/commercial-flooring/resources/technical-hub/technical-information

VISIT US ONLINE

at karndeancommercial.com where you can...

Find website support

The website offers a wealth of inspiration, case studies and design ideas, detailed technical information and a look inside our head office and warehouse. When you are designing floors this is your point of reference for information, samples and practical support.



Website tools include:

Find a retailer

Floorstyle tool

Product selector

Order samples

Downloads

Style Finder

Moodboard Tool

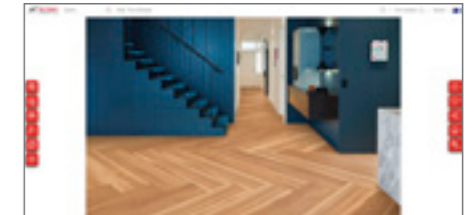
Order samples

If you need some extra help selecting the best colour for your room, why not order some cutting samples? These are small samples designed to help you pick which product is right for you.



Check out our Digital Specification Library

We have developed a great tool which allows you to pick a room and see what different floors will look like. It's really easy to use and will allow you to create your perfect Designflooring combination.








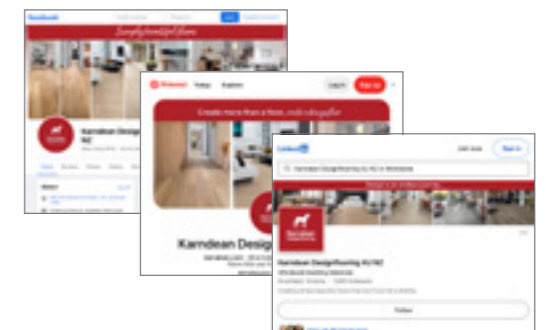
Sign up for our e-newsletter

We'd love to keep in touch with you. To receive our email communications sign up online today.

Keep up-to-date with us

Keep in touch on social media. Share your new floors and reviews with us; we look forward to hearing from you.

-  Like us on Facebook [karndeananz](https://www.facebook.com/karndeananz)
-  Follow us on Instagram [karndean_auz](https://www.instagram.com/karndean_auz)
-  Join us on LinkedIn [Karndean Designflooring ANZ](https://www.linkedin.com/company/karndean-designflooring-anz)
-  Follow our boards on Pinterest [Karndean_auz](https://www.pinterest.com/karndean_auz)
-  Find us on YouTube [KarndeanDesignFloors](https://www.youtube.com/KarndeanDesignFloors)



KARNDEAN EVOLVE™

THE PROMISE OF A BETTER TOMORROW.

It's a new day. And we're ready to create a better tomorrow.

Sustainable manufacturing. Complete supply chain transparency. Closed-loop product life cycles. And an even stronger commitment to fair and inclusive workplaces.

It's a continuing journey, and there are no shortcuts. But we know now's the time for everyone to begin taking bigger steps. Ours is a promise to think differently, act decisively, and create real change.

It's a promise to Evolve.

01

CONFRONT CLIMATE CHANGE

Karndean's products prioritise sustainability through remarkable longevity, with a guaranteed service life of 35 years for domestic use. This extended durability has a significant positive environmental impact over time, promoting an eco-friendlier future.

02

HEALTH AND WELL-BEING

Karndean's products prioritise wellbeing, surpassing mere aesthetics. Free from harmful substances like heavy metals and unsafe phthalates, they're certified for indoor air quality post-installation. Our dedication to healthy interiors extends to using water-based or solvent-free adhesives, minimising VOC emissions. Your health and comfort are central to Karndean's philosophy.

03

SUSTAINABLE USE OF RESOURCES

Karndean prioritise the use of recycled materials in their products, with all of them incorporating up to 50% recycled PVC in their backing layers, sourced from post-production waste. We validate our contribution to reducing landfill and promoting recycling.

04

INCLUSION AND DIVERSITY

We prioritise equity, inclusivity, and diversity, fostering them through engagement and education. In our workplace, we celebrate everyone's contributions as responsible corporate citizens. These values influence our environmental policies, responsible sourcing/trading, and contributions to communities. Our founder's principles still shape our commitment to responsible operations.

05

SUPPLY CHAIN TRANSPARENCY

Third-party certifications for environmental and social responsibility, including fair treatment and safe conditions for workers. Karndean's factories prioritise recycled materials and recyclability, to ecofriendly product packaging, setting the benchmark for environmental responsibility. Certified manufacturing adhere to ISO 14001 and ISO 9001 standards.

06

EDUCATION

We educate employees about the importance of sustainability, helping them understand what role they play and devise new ways of working. By conducting CPD classes and speaking engagements with organisations like the Green Building Council of Australia, we actively contribute to the training of professionals in the design and construction.



Discover Karndean Evolve™

TECHNICAL SPECIFICATION

	Standard	Gluedown result
Thickness	EN ISO 24346	2.5 mm
Wear layer	EN ISO 24340	0.5 mm
Surface treatment		K-Guard+® PU coating
Warranty ¹	Commercial Domestic	15 years wear Lifetime wear
Bevelled edge		Micro
Standards	ASTM F1700	Pass
Classification	ISO 10874 - Commercial ISO 10874 - Domestic	33: Commercial heavy 23: Domestic heavy
Reaction to fire	AS/NZS 9239.1:2010	CRF: > 11 kW/m ² Smoke value: 93% min.
Staining resistance	EN ISO 26987/EN 423 ASTM F925	Excellent Pass
Light fastness	ISO 105-B02 ASTM F1515	Pass (≥ 7) Pass (< 8)
Abrasion resistance	EN 660-2 ISO 10582 ASTM D3884	Group T Type I Pass
Flexibility	ISO 24344	Pass
Dimensional stability	EN 434/ISO 23999 ASTM F2199	Pass (≤ 0.25%) Pass
Acoustic impact noise reduction ²	EN ISO 717-2/EN ISO 140-8	ΔL _w = 2 dB
Electrical behaviour body voltage	EN 1815	Pass
Indentation - residual	EN 433/ISO 24343-1 ASTM F1914	Pass (≤ 0.1 mm) Pass (< 8%)
Castor chair continuous use	EN 425/ISO 4918	Pass
Thermal resistance	ISO 8302	0.0097 m ² K/W Suitable for underfloor heating. Max 27°C
Slip resistance ³	AS/NZS 4586:2013	See separate table
Adhesive	General use: High temperature:	Karndean Mega-Bond Karndean 8000 2-part Polyurethane
Environmental	GBCA/NZGBC GreenStar Rating System	GreenRate Level 'A'; LCA Silver Plus; Best Practice PVC
	Floorscore SCS-EC10.3-2014 v4.0	Indoor air quality certified; Compliant low emitting VOC emissions.
	Indoor Air Comfort	Gold certification Compliant low emitting VOC emissions
	Environmental Product Declaration	Product-specific Type III EPD (products with external third-party verification)
	NSF/ANSI 332	Sustainability Assessment for Resilient Floor Coverings; Conformant product
	ISO 14001 / ISO 9001	Manufactured to quality and environment management systems standards
Recycling		Suitable
Phthalate free		Yes

¹ Subject to terms. Please see our website.

² Result is Ln,w = 58 dB when installed on Regupol 4515 acoustic underlay.

³ Slip resistance is measured on freestanding ex-factory product. Slip resistance can be affected by many factors, including but not limited to; product installation and underlayment, surface contamination, use, wear and how the product is maintained. Textural variation along the surface of the product can affect nominal values.

Every Karndean range and format meets our certification policy standards – be sure to verify the current certification status

Product	Size (mm)	Slip Resistance Oil-Wet Ramp
WP311	914.4 x 152.4	R10
WP312	914.4 x 152.4	R10
WP313	914.4 x 152.4	R10
WP313-SR	914.4 x 152.4	R11
WP315	914.4 x 152.4	R10
WP316	914.4 x 152.4	R10
WP318	914.4 x 152.4	R10
WP318-SR	914.4 x 152.4	R11
WP319	914.4 x 152.4	R10
WP319-SR	914.4 x 152.4	R11
WP329	914.4 x 152.4	R10
WP329-SR	914.4 x 152.4	R11
WP411	1219.2 x 228.6	R10
WP411-SR	1219.2 x 228.6	R11
WP413	1219.2 x 228.6	R10
WP414	1219.2 x 228.6	R10
WP421	1219.2 x 228.6	R10
WP422	1219.2 x 228.6	R10
WP423	1219.2 x 228.6	R10
SP111	457.2 x 457.2	R10
SP114	457.2 x 457.2	R10
SP115	457.2 x 457.2	R10
SP211	457.2 x 609.6	R10
SP212	457.2 x 609.6	R10
SP213	457.2 x 609.6	R10
SP213-SR	457.2 x 609.6	R11
SP214	457.2 x 609.6	R10
SP215	457.2 x 609.6	R10
SP216	457.2 x 609.6	R10
SP217	457.2 x 609.6	R10



Niveus WP411





t. 1800 331 170* www.karndeancommercial.com

835 Stud Road Knoxfield,
Victoria 3180, Australia



customerservice@karndean.com.au

BR24-OP-COMM | KD8508ANZ | 12/24

*Calls may be recorded for training and quality purposes.

Imagery and Design Reproduction

Photography and print cannot always produce a perfect representation of our products. This includes colour, pattern variation and installation elements used. For this reason we strongly recommend obtaining a product sample and where possible viewing a larger sample in-store. We also recommend visiting our website for information on installation, after care and product selection. We love developing new ideas and improving on our existing designs which means that sometimes products are withdrawn at short notice. We hate to disappoint and will work with you to find an alternative design. Please contact Customer Service for more information. It is recommended that when selecting flooring products, you verify compliance with building regulations and certification practices relevant to your local area. All Karndean range and format credentials are at our certification policy level – please check for the current certification status

Front cover: Niveus **WP411**