



**Karndean**  
Designflooring  
Commercial

HK

The Studios  
at HumanKind

| Multifamily

# The Challenge

After witnessing the devastating toll the COVID-19 pandemic was taking on the homeless community in Wichita, Kansas, area nonprofit HumanKind Ministries acquired a former hotel with a goal of transforming the property into a welcoming 54-unit, low-barrier facility.

The redevelopment project involved substantial changes to both the exterior and interior of the three-story building. Leaders of the nonprofit expressed one of the biggest goals of the design project was to ensure that the new space didn't feel or look institutional. HumanKind helps individuals (many of whom suffer from trauma, behavioral health issues, substance abuse disorders and more) progress directly from homelessness into permanent, affordable housing. It was imperative that the renovations include facility beautification, converting each room into a homey studio and adding welcoming office spaces for social service providers.

Designers at Health Facilities Group (HFG) sought a highly durable and equally as welcoming flooring solution for the many high traffic areas within the new space. With a comforting, residential aesthetic in mind, the team sought a wood and stone visual that would be easy to clean and maintain, in addition to withstanding the foot traffic.



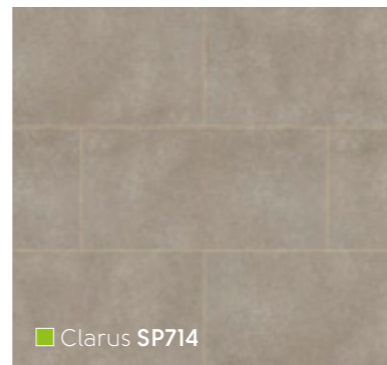
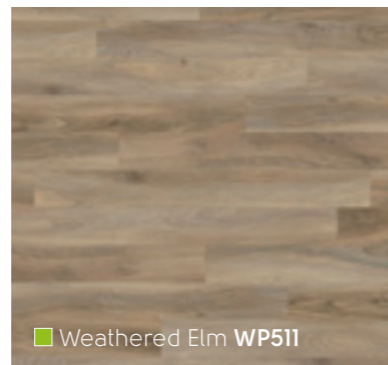
**Sector:** Multifamily

**Client:** HumanKind Ministries

**Designer:** Health Facilities Group

**Area:** 22,500 ft<sup>2</sup>

**Location:** Wichita, KS



# The Solution

The design team at Health Facilities Group selected Karndean Designflooring as its flooring partner for the redevelopment project because of the products' proven record of withstanding wear and tear and ease of cleaning and maintenance. Karndean luxury vinyl flooring contributes to improved indoor air quality by being low-VOC, phthalate-free and does not harbor bacteria, which is a critical component in multi-unit dwellings.

"We looked at options provided by a few other manufacturers, but we selected the Karndean products because of their original visuals, quality and durability and how they offered a warm and inviting feel to the space," HFG Director of Interior Design, CHID, IIDA, NCIDQ, EDAC Susan Sanders said.

In order to achieve the desired look and feel, HFG designers used two visuals from the 20mil Opus gluedown product range. The Opus range was selected because it offered a variety of wood and stone looks that coordinated with one another and paired well with other product selections within the spaces.

# The Results

Opus stone product Clarus SP714 is used in all common areas and corridors throughout the second and third floors of the building, and the warm and inviting Opus wood plank Weathered Elm WP511 was used within the studio apartments for a homier feel.

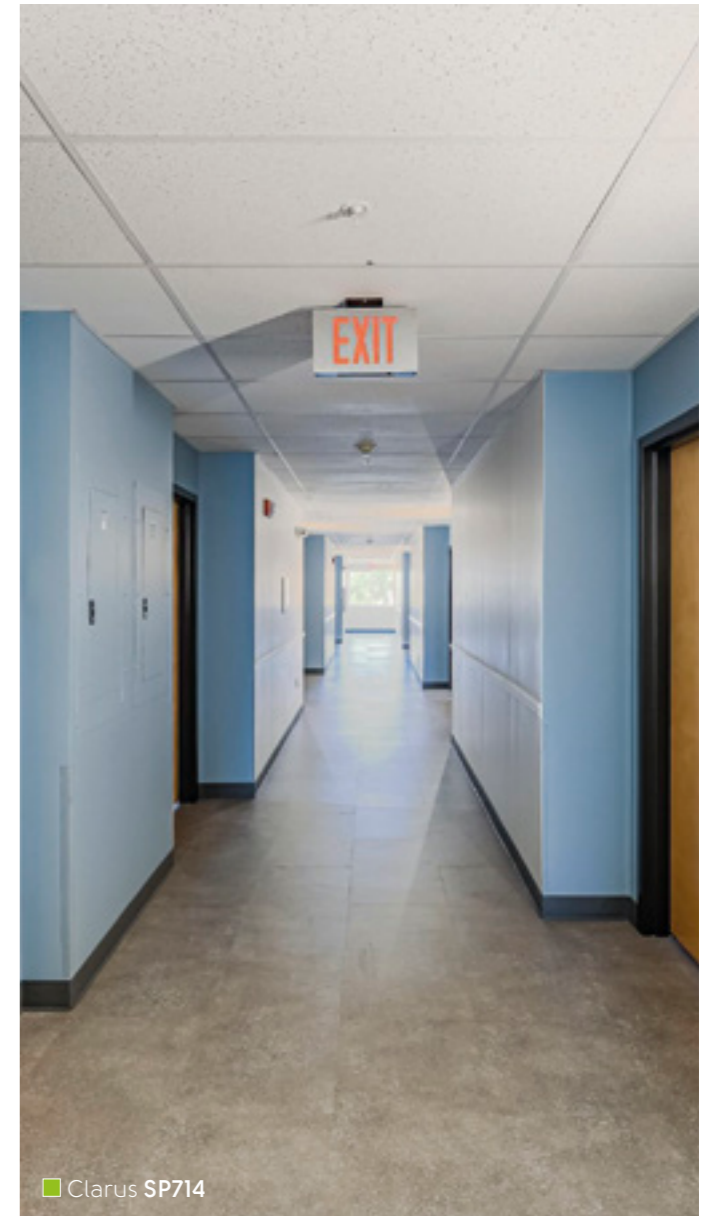
By specifying two products from within the same range, designers eliminated the need for physical transitions from the corridor to the studio and reduced the risk of trips and falls.

According to Sanders, the design team was not only pleased with the flooring solution, but also impressed with the accessibility and depth of knowledge demonstrated by the Karndean Commercial Business Manager throughout the design process.

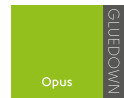
The Studios at HumanKind was recognized as Wichita Business Journal's 2021 top project of the year.

Karndean Designflooring is proud to be a part of projects that provide support to family-focused initiatives.

Products used: ■ Weathered Elm **WP511**, Clarus **SP714**



# Products Specified:



## Opus

	Standard	Result
<b>Size</b>		Plank: 36" x 4" (914.4 mm x 101.6 mm) Tile: 18" x 36" (457 mm x 915 mm)
<b>Thickness</b>		2.5 mm
<b>Wear layer</b>		20 mil (0.50 mm)
<b>Warranty*</b>	Commercial Residential	15 years Lifetime
<b>Beveled edge</b>		Micro
<b>Slip resistance**</b>	ASTM D2047	Pass (Dry >0.89)
<b>Acoustic impact noise reduction</b>	ASTM E2179-09 ASTM E492-09	ΔIIC = 4 dB IIC = 44 dB (6" Concrete Slab w/ Drop Ceiling) IIC = 71 dB (6" Concrete Slab w/ Drop Ceiling + Quiet Choice)

\* Subject to terms.

\*\* Slip resistance is measured on freestanding ex-factory product. Slip resistance can be affected by many factors including but not limited to: product installation and underlayment, surface contamination, use, wear and how the product is maintained. Textural variation along the surface of the product can affect nominal values.



Clarus SP714

### Technical Information

To view the full technical specification for each of our product ranges visit our website or text any product code to Karndean Info:

[karndean.com/commercialtechdata](http://karndean.com/commercialtechdata)  
(877) 850-0376



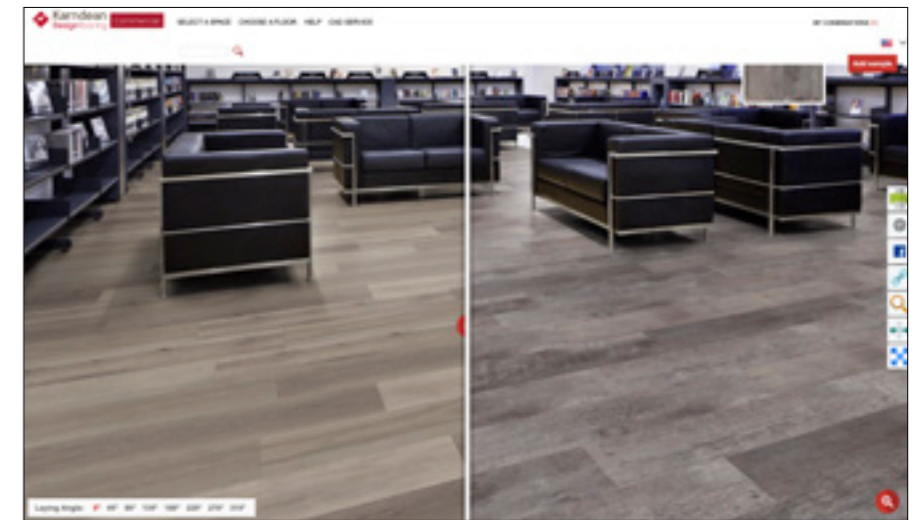
# Feeling Inspired?

We have a variety of tools available to help you achieve the look you desire for your project:

### Floorstyle Floor Designer

Once you've narrowed down your color choices, use our free interactive design tool to upload a photo of your project and experiment with lay patterns, download CAD files and request samples.

[karndean.com/commercialfloorstyle](http://karndean.com/commercialfloorstyle)

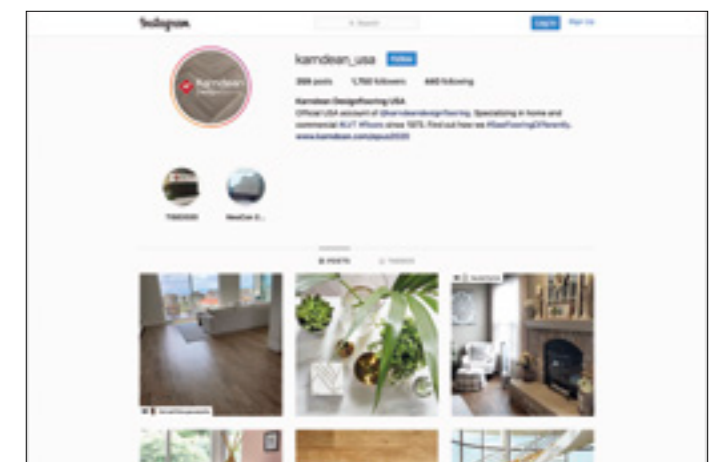
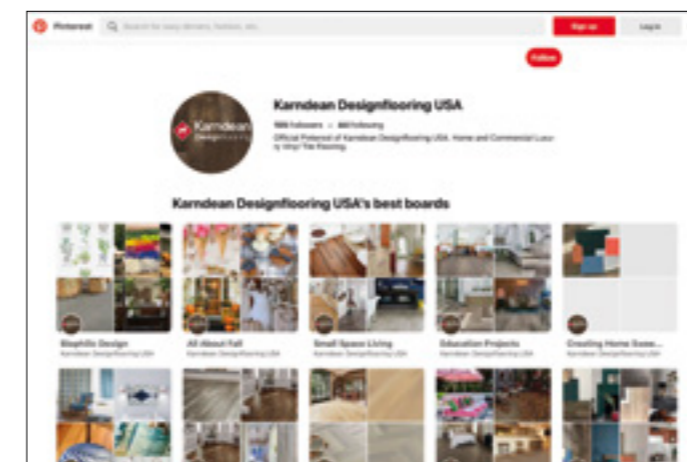


### Digital Product Library

Browse our digital library of commercial luxury vinyl flooring, including our Product Selector and architectural folders, organized by product range and type of visual.

[karndean.com/digitalproductlibrary](http://karndean.com/digitalproductlibrary)

### Keep Up To Date With Us:



Follow our boards on Pinterest  
[karndeandesignflooringUSA](https://www.pinterest.com/karndeandesignflooringUSA)

Follow us on Instagram  
[karndean\\_usa](https://www.instagram.com/karndean_usa)

