

KARNDEAN LOOSELAY

Loose lay is a format of luxury vinyl flooring featuring our K-Wave® friction grip backing that holds the product in place. It creates a strong bond to the subfloor using a combination of weight and friction.

Karndean 

IT'S A NEW DAY

AND WE'RE COMMITTED TO
CREATING A BETTER TOMORROW.

Karndean Evolve® is not only about the planet, but it's about the people too. Six focus areas drive us forward.

01

Confronting
climate change

02

Health and
wellbeing

03

Sustainable use
of resources

04

Diversity and
inclusion

05

Supply chain
transparency

06

Education



Guaranteed quality

Our factories are ISO 9001 certified



Environmental responsibility

ISO 14001 certified for sustainable practices



Transparency

Third-party verified, product
and region specific EPDs



Recycled material

Up to 50% recycled material
in the backing layers



Long lasting, lower impact

Durable, high quality flooring reduces
the need for replacement

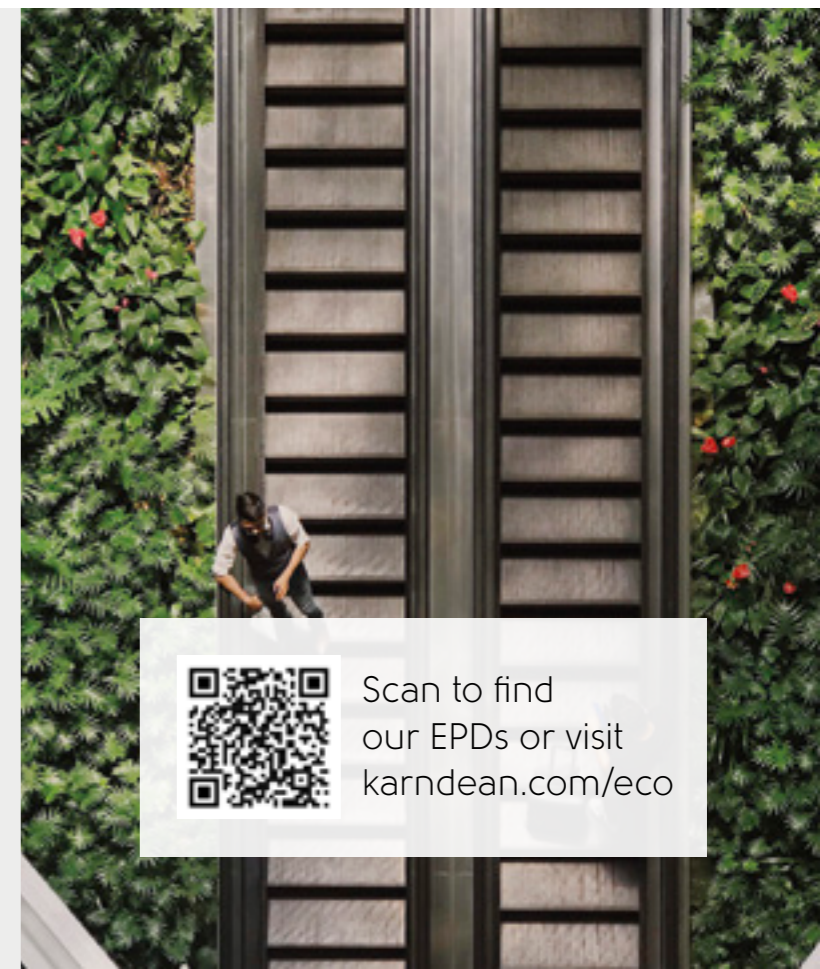


Low VOCs

Eurofins Indoor Air Comfort (Gold) certified



Scan to find
our EPDs or visit
karndean.com/eco





Karndean LooseLay's K-Wave® Friction Grip Backing



Easy access to underfloor panels.



Reduces noise transfer to room below by 13dB.



Quick and easy to install



Individually replaceable

Karndean LooseLay wood provides intricate designs and durability in a format that can be installed quickly and easily in any space. Featuring enhanced acoustic properties and excellent environmental credentials, it's the perfect choice for a wide variety of installations. Each plank can be lifted individually, making it perfect for spaces where access is required for underfloor services.

1050.0mm x 250.0mm (41.34" x 9.84")



Ashland **LLP95**



Country Oak **LLP92**



Hudson **LLP99**



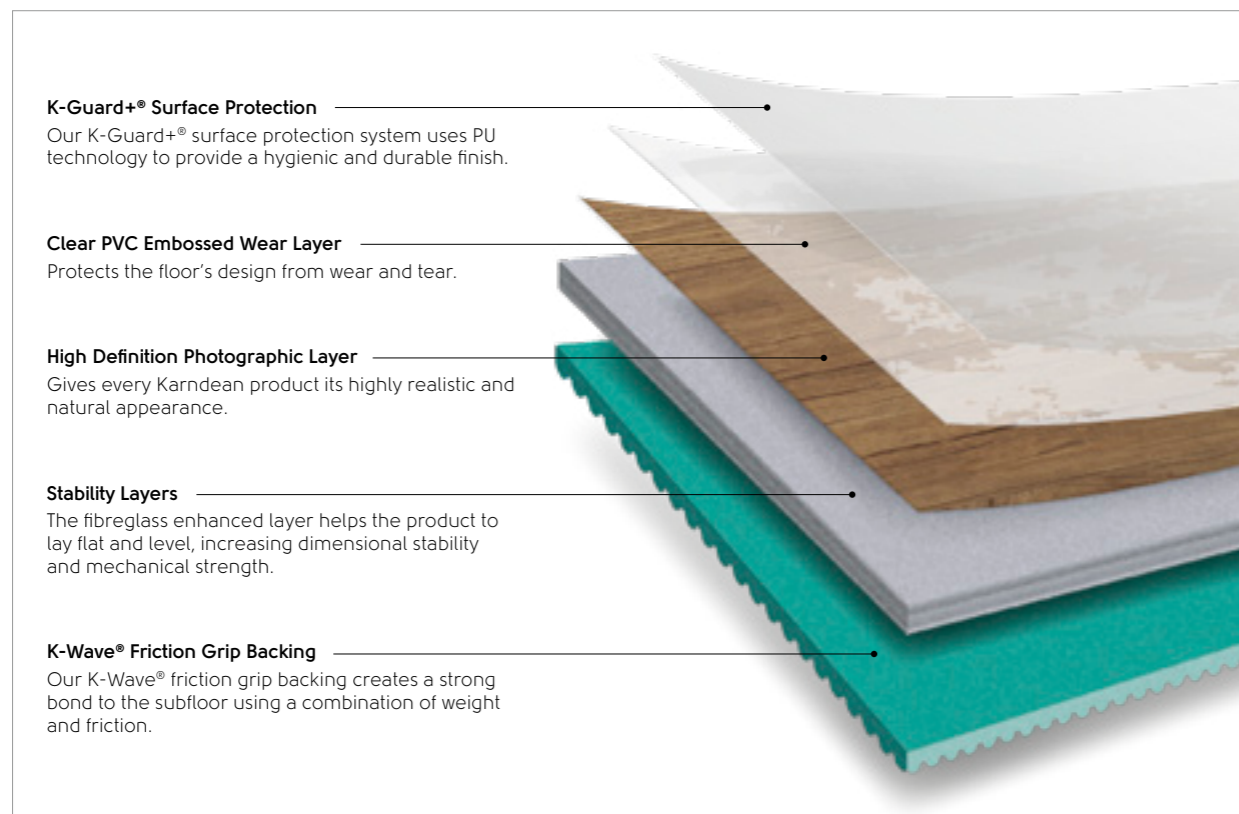
Cambridge **LLP113**



Providence **LLP108**



Newport **LLP94**



1050.0mm x 250.0mm (41.34" x 9.84")



Traditional Oak **LLP101**



Vintage Timber **LLP105**



Weathered Timber **LLP103**



Stamford **LLP109**

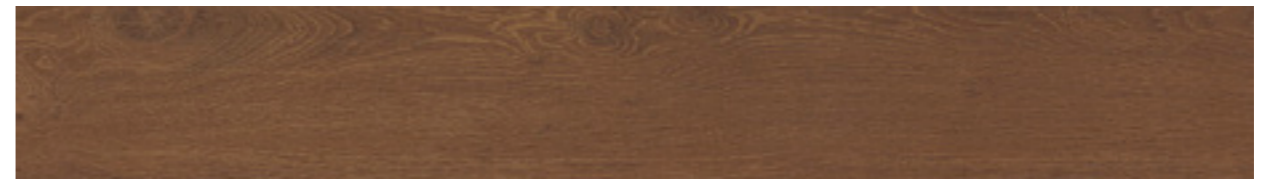


Antique Timber **LLP106**

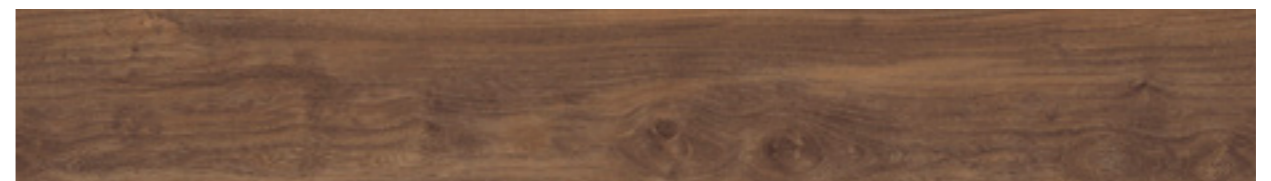


Burlington **LLP110**

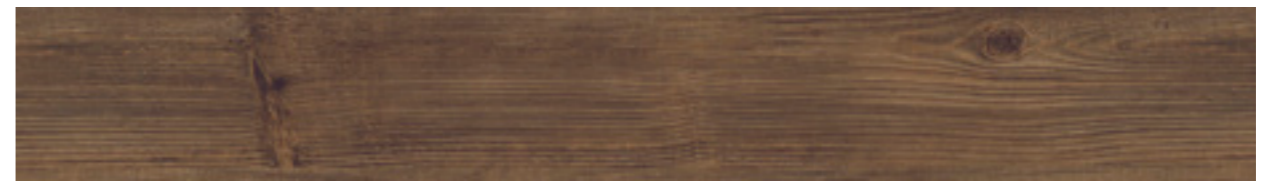
1050.0mm x 250.0mm (41.34" x 9.84")



Boston **LLP111**



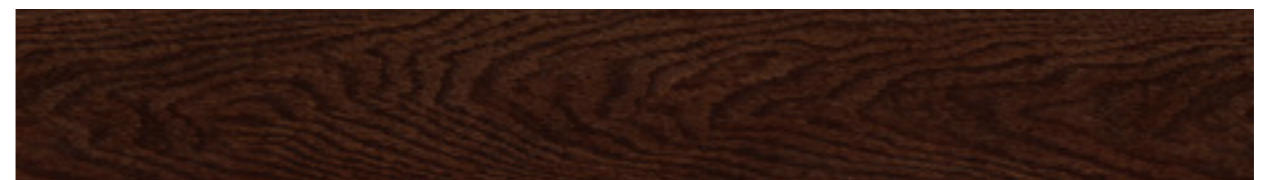
Heritage Oak **LLP102**



Rustic Timber **LLP104**



Hartford **LLP112**



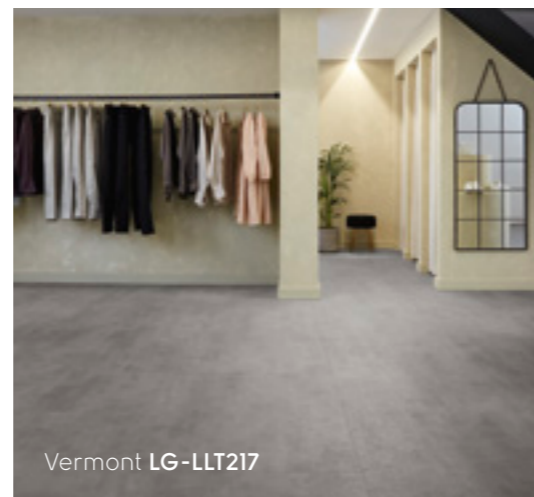
Dover **LLP93**

Available in a large-format rectangular tile, Karndean LooseLay stone is easy to install and features our K-Wave® friction grip backing designed to hold products in place without the need for clicking or locking. A selection of our designs are now available in an extra large 1m² size variant making it easier to achieve a streamlined minimalist look.

500.0mm x 610.0mm (19.69" x 24.02") | *1000.0mm x 1000.0mm (39.37" x 39.37")



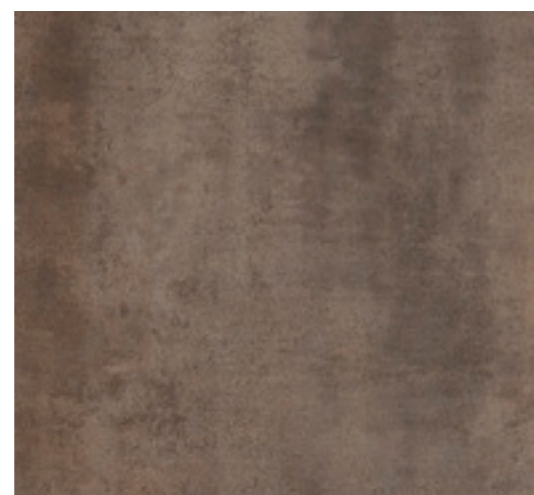
Seattle **LLT214**



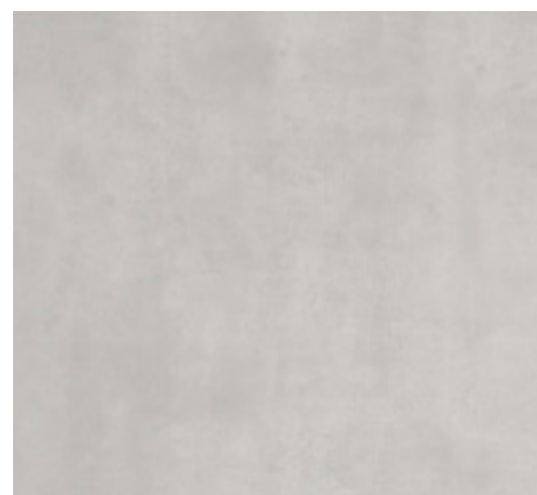
Vermont **LG-LLT217**



Indiana **LLT202**



Arizona **LLT200**

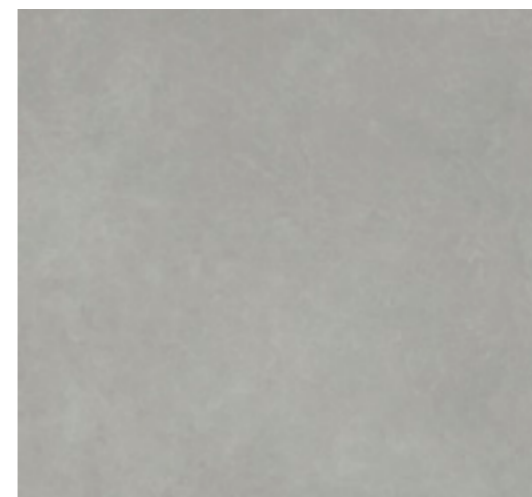


Alaska **LLT215**



Quebec **LLT219 | LG-LLT219****

500.0mm x 610.0mm (19.69" x 24.02") | *1000.0mm x 1000.0mm (39.37" x 39.37")



Ontario **LLT218**



Utah **LLT216**



Colorado **LLT201 | LG-LLT201****



Vermont **LLT217 | LG-LLT217****



Dakota **LLT212**



Madison **LLT203**

*Available in extra large 1m² tiles

**Available in extra large 1m² tiles

Think big

Available in 12 woods, our 1500mm planks are 42% longer than our standard loose lay products, helping to achieve faster installation times.

1500.0mm x 250.0mm (59.06" x 9.84")



Bleached Tasmanian Oak **LLP311**



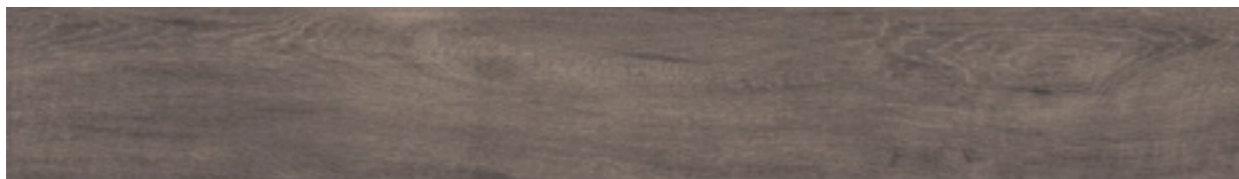
Weathered Heart Pine **LLP304**



French Grey Oak **LLP308**



Twilight Oak **LLP301**



Raven Oak **LLP302**

1500.0mm x 250.0mm (59.06" x 9.84")



Pearl Oak **LLP306**



Champagne Oak **LLP310**



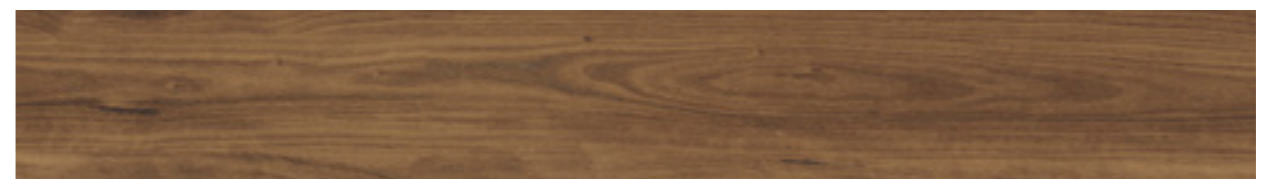
Lemon Spotted Gum **LLP317**



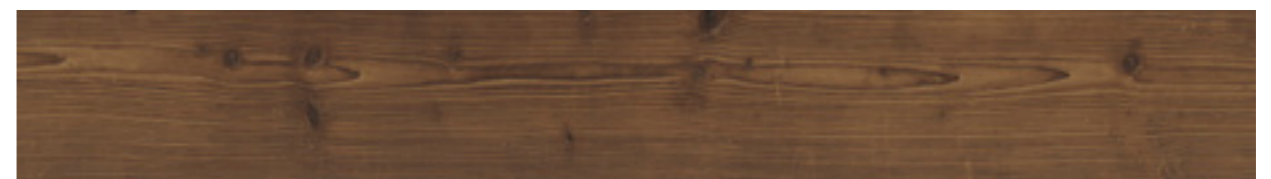
Reclaimed Heart Pine **LLP305**



Neutral Oak **LLP307**



Character Walnut **LLP315**



Antique Heart Pine **LLP303**

TECHNICAL SPECIFICATION

	Standard	Result
Size	EN ISO 24342	1050.0 mm x 250.0 mm (41.34" x 9.84")
		500.0 mm x 610.0 mm (19.69" x 24.02")
		1500.0 mm x 250.0 mm (59.06" x 9.84")
		1000.0 mm x 1000.0 mm (39.37" x 39.37")
Thickness	EN ISO 24346	4.5 mm
Wear layer	EN ISO 24340	0.55 mm
Surface treatment		K-Guard+® PU coating
Guarantee¹	Light Industrial	15 years
	Commercial	15 years
	Residential	Lifetime guarantee
Bevelled edge		No
Mass	EN ISO 23997	7470 g/m ²
Standards	EN 649 / EN ISO 10582	Pass
Classification	EN 685 / EN ISO 10874: Light Industrial	42: Light industrial general
	Commercial	33: Commercial heavy
	Domestic	23: Domestic heavy
Reaction to fire	EN 13501-1	B _f -s1
Staining resistance	EN ISO 26987 / EN 423	Excellent
Light fastness	EN ISO 105-B02	Pass (≥7)
Abrasion resistance	EN 649	Group T
	EN ISO 10582	Type 1
Flexibility	EN ISO 24344	Pass
Dimensional stability	EN 434/EN ISO 23999	Pass (≤0.10%)
Acoustic impact noise reduction	EN ISO 717-2 / EN ISO 140-8	ΔL _w = 13 dB
Indentation - residual	EN 433 / EN ISO 24343-1	Pass (≤0.1 mm)
Castor chair continuous use	EN 425 / EN ISO 4918	Pass
Thermal resistance	ISO 8302	0.0245 m ² K/W
		Suitable for underfloor heating. Max 27°C
Slip resistance²	EN 13893	DS
	DIN 51130	R10
Environmental	Indoor Air Comfort	Gold certification; Compliant low emitting VOC emissions.
	Floorscore SCS-EC10.3-2014 v4.0	Indoor air quality certified; Compliant low emitting VOC emissions.
	Environmental Product Declaration	External third-party verified Type III EPD.
	NSF/ANSI 332	Sustainability Assessment for Resilient Floor Coverings; Silver certified product.
Adhesive		Please refer to our installation instructions
Recycling		Suitable
Phthalate free		Yes

¹ Subject to terms. Please see our website.

² Slip resistance is measured on freestanding ex-factory product. Slip resistance can be affected by many factors, including but not limited to; product installation and underlayment, surface contamination, use, wear and how the product is maintained. Textural variation along the surface of the product can affect nominal values.





4.5mm | 0.55mm

Karndean



karndeancommercial.com

Karndean Designflooring, Crab Apple Way,
Vale Park, Evesham, Worcestershire, WR11 1GP



Karndean Designflooring - Commercial
Call: 0044 (0)1386 820100
Email: commercial@karndean.co.uk
For ROI call: 01 6569887

KD8394UK | COMLLAYPRES2