

ART SELECT

Our Art Select range is made up of our most intricate designs combined with detailed embossing techniques and elegant bevelled edges. Each tile has been carefully created to replicate precious wood and stone, enabling the same opulent look while preserving the natural source material.

Karndean 

IT'S A NEW DAY

AND WE'RE COMMITTED TO
CREATING A BETTER TOMORROW.

Karndean Evolve® is not only about the planet, but it's about the people too. Six focus areas drive us forward.

01
Confronting
climate change


02
Health and
wellbeing


03
Sustainable use
of resources


04
Diversity and
inclusion


05
Supply chain
transparency


06
Education

 **Guaranteed quality**
Our factories are ISO 9001 certified

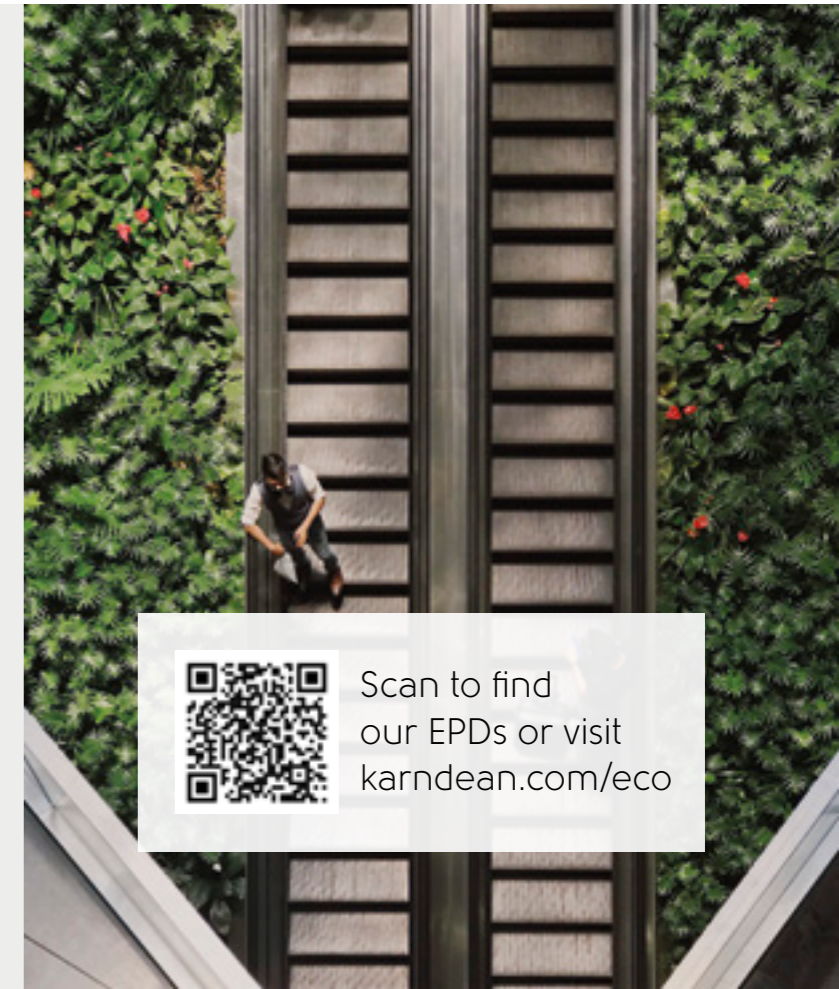
 **Environmental responsibility**
ISO 14001 certified for sustainable practices

 **Transparency**
Third-party verified, product
and region specific EPDs

 **Recycled material**
Up to 50% recycled material
in the backing layers

 **Long lasting, lower impact**
Durable, high quality flooring reduces
the need for replacement

 **Low VOCs**
Eurofins Indoor Air Comfort (Gold) certified



Scan to find
our EPDs or visit
karndean.com/eco



A STORY OF EXCELLENCE

After two years and thousands of hours of development, we proudly present a curated collection of 55 exclusive luxury vinyl tile designs.

Inspired by coveted materials rarely seen in flooring, each tile embodies the essence of precious natural sources.

Beyond their stunning designs, our craftsmanship authentically brings to life the source materials. From bespoke hand-etched and hand-scraped embossing to high-quality printed visuals and bevelled edges, our tiles replicate the allure of the real thing in large tiles for a luxurious finish.

Each design carries its own origin story, inviting you to explore its full potential. Where will you take it next?



WHY ART SELECT?



Extraordinary craftsmanship

Each design uniquely accentuates the natural beauty of its source material, finished with highly realistic embossing, hand-scraped details, or bevelled edges.



Accessible luxury

These exclusive source materials are difficult to extract and costly to source. Specify our authentic luxury designs, in stock and ready for your next project.



Effortless maintenance

Featuring our K-Guard+® surface protection layer. This innovative technology prevents scratches and stains, ensuring easy cleaning and eliminating the need for sealing.



Endless design possibilities

Our floors are designed to offer effortless installation, accommodating bespoke designs and bold laying patterns without limitations.



Made to last

Completely waterproof, our floors won't warp, crack or swell and are reinforced by a lifetime guarantee*.



Achieve grandeur

Large scale planks and tiles have been selected to maximize visual impact and enhance the feeling of luxury in your space.



Rose Onyx LM36



Castle Hill Ash RL39

THE ART OF **ART SELECT**

To ensure that each plank and tile replicates the source material as authentically as possible, a further level of craftsmanship has been considered for our Art Select range.



Dove Artisan Oak RL30

Registered emboss

Seen in our Artisan Oaks, a registered emboss has been meticulously hand-etched to trace the wood grain within the print.



Tweed Oak RL37

Handscraped emboss

Our European Oaks have been subtly scraped, a finish unique to Karndean, which consisted of using a handscraped emboss cast from the natural material to achieve an undulating subtly textured finish.



Ionic Marble LM30

Bevelled edge

All designs feature a uniform bevelled edge, achieved due to the 0.7mm wear layer. This rounded, undulating detail adds character and authenticity, providing depth to the designs under any lighting.

SEAMLESS TRANSITIONS

Specify the Art Select gluedown collection to achieve elegant zoning and wayfinding, perfect for office fit-outs, hotels, and leisure spaces. Seamlessly blend materials like calacatta marble, limed washed oaks, onyx tiles, or weathered concrete for endless design possibilities. Whether bespoke or hand-cut, Art Select ensures effortless installation and lasting quality.



Artisan Oaks

Highlighting its flowery grain and tight linear markings with a liming technique from the Art Deco period, our Artisan Oaks are a characterful representation of original European Oak.

1422.4mm x 228.6mm
(56.0" x 9.0")



Pale Artisan Oak **RL32**



Clay Artisan Oak **RL29 | SM-RL29***



Golden Artisan Oak **RL31 | SM-RL31***



Dove Artisan Oak **RL30 | SM-RL30***



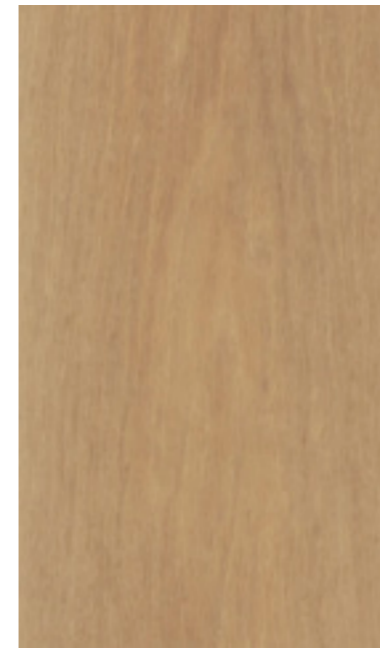
Grey Artisan Oak **RL33**

* Also available in small plank: 457.2mm x 76.2mm

French Oaks

Long established as a popular choice in flooring, French Oak is characterised by its single-smoking and oiling process designed to enhance its flowing grain.

1422.4mm x 228.6mm
(56.0" x 9.0")



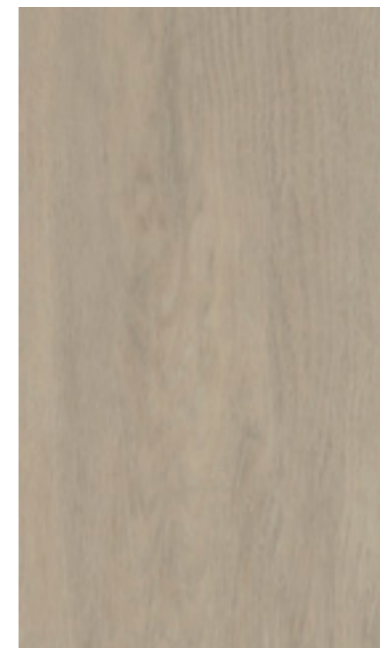
Savannah Oak **RL23 | SM-RL23***



Mountain Oak **RL22 | SM-RL22***



Dune Oak **RL24 | SM-RL24***



Glacier Oak **RL21 | SM-RL21***



Prairie Oak **RL20 | SM-RL20***



Canyon Oak **RL25**

1219.2mm x 114.3mm
(48.0" x 4.5")

* Also available in small plank: 457.2mm x 76.2mm

Kent Ash

Ash forms a crucial part of the UK wildlife landscape. We have chosen to carefully replicate this design due to its natural tonal variation, perfect for achieving a refined strip wood floor.

1219.2mm x 114.3mm
(48.0" x 4.5")



Canterbury Ash **RL41**



Tolsford Ash **RL42**



Castle Hill Ash **RL39**

European Oaks

Our European Oaks are attributed to our founder, who was fascinated by the intricate grain patterns of the felled trees he observed while jogging through the Clent Hills.

1219.2mm x 177.8mm
(48.0" x 7.0")



Cotton Oak **RL38**



Damask Oak **RL35**

1219.2mm x 114.3mm
(48.0" x 4.5")



Natural Oak **RL48**

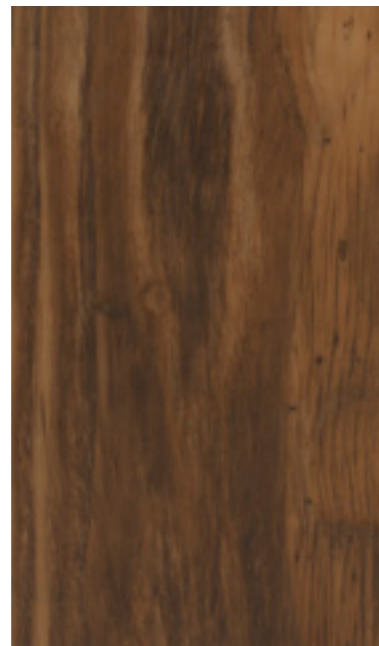
Chestnut

Salvaged from the floor joists, granary boards and roof rafters of American barns.

1422.4mm x 228.6mm
(56.0" x 9.0")

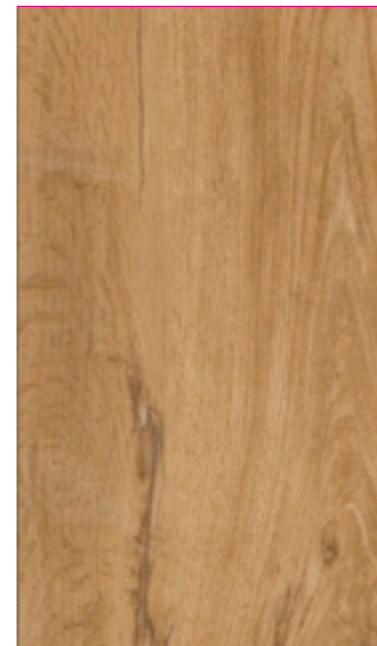


Summerhouse Ash **RL40**

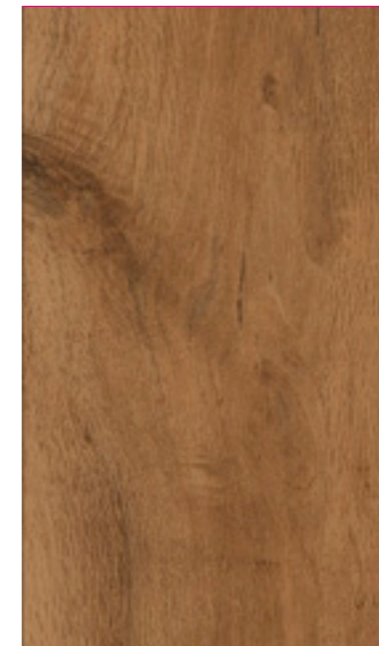


Reclaimed Chestnut **EW21 | RPL-EW21***

1219.2mm x 177.8mm
(48.0" x 7.0")



Spring Oak **RL01 | AP01* | SBW-RL01****



Summer Oak **RL02**

914.4mm x 152.4mm
(36.0" x 6.0")



Morning Oak **HC02 | AP06***

* Also available in random plank: 114.3mm, 152.4mm, and 228.6mm width and various lengths

* Also available in small plank: 228.6mm x 76.2mm

** Also available in basketweave: 114.3mm x 114.3mm / 76.2mm x 304.8mm

1219.2mm x 177.8mm
(48.0" x 7.0")



Salon Oak **RL13 | AP08***

1219.2mm x 114.3mm
(48.0" x 4.5")



Limed Linen Oak **RL47**

1219.2mm x 177.8mm
(48.0" x 7.0")



Merino Oak **RL36**

1219.2mm x 114.3mm
(48.0" x 4.5")



Limed Silk Oak **RL46**

914.4mm x 152.4mm
(36.0" x 6.0")



Dawn Oak **HC01 | AP02* | SBW-HC01****

1219.2mm x 177.8mm
(48.0" x 7.0")



Spanish Cherry **RL05 | AP05***

1219.2mm x 177.8mm
(48.0" x 7.0")



Canvas Oak **RL34**



Tweed Oak **RL37**



Storm Oak **RL12 | AP07* | SBW-RL12****

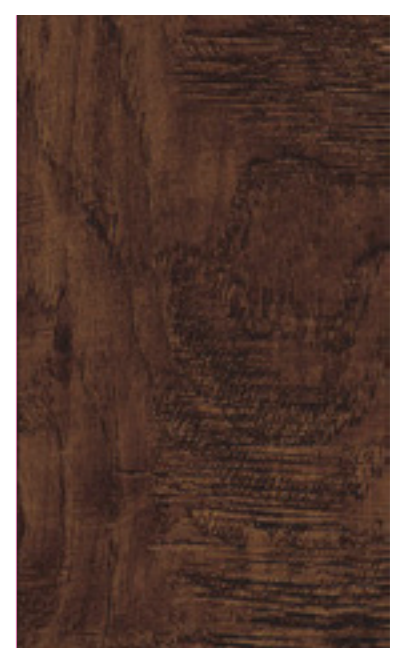
914.4mm x 152.4mm
(36.0" x 6.0")



Midnight Oak **HC06 | AP03***



Hickory Nutmeg **EW03**



Hickory Peppercorn **EW02**

Hickory

A highly tactile surface texture has been used to create visual interest and authentically replicate hickory planks.

914.4mm x 152.4mm
(36.0" x 6.0")

* Also available in small plank: 228.6mm x 76.2mm

** Also available in basketweave: 114.3mm x 114.3mm / 76.2mm x 304.8mm

* Also available in small plank: 228.6mm x 76.2mm

** Also available in basketweave: 114.3mm x 114.3mm / 76.2mm x 304.8mm

Holm Oaks

Found in Northern Spain, cultivated for acorns rather than timber, this design is one of a kind. With unique hand scraping, we uncovered it's raw yet refined grain, complemented by a soft milky wash.

1422.4mm x 228.6mm
(56.0" x 9.0")



Basque Oak **RL26 | SM-RL26***



Bellota Oak **RL27 | SM-RL27***



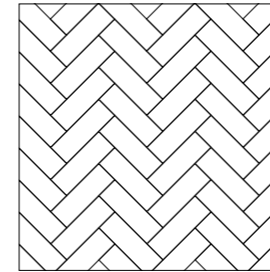
Serrano Oak **RL28 | SM-RL28***

* 711.2mm x 114.3mm (28.0" x 4.5")

PATTERN GUIDE

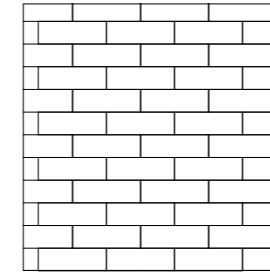
Experiment with laying patterns to create subtle zones, establish interesting focal points or add depth to your space.

Herringbone

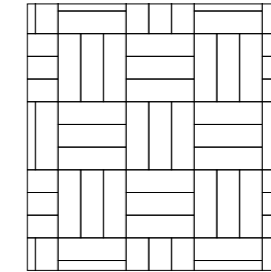


228.6mm x 76.2mm (9.0" x 3.0") | 457.2mm x 76.2mm (18.0" x 3.0")

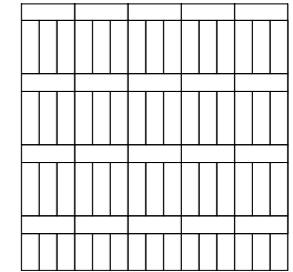
Brick



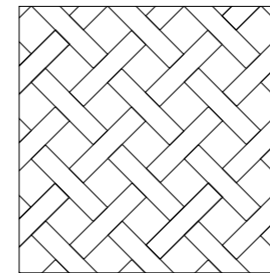
Block



Ladder



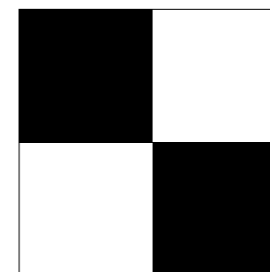
Basketweave



114.3mm x 114.3mm (4.5" x 4.5") | 304.8mm x 76.2mm (12.0" x 3.0")

The classic basketweave panel is available in Spring Oak, Storm Oak, and Dawn Oak, with matching planks available to seamlessly carry the design from room to room.

Chequerboard



457.2mm x 457.2mm (18.0" x 18.0")

Create a striking geometric floor by laying our Greek Marbles in a timeless chequerboard pattern.

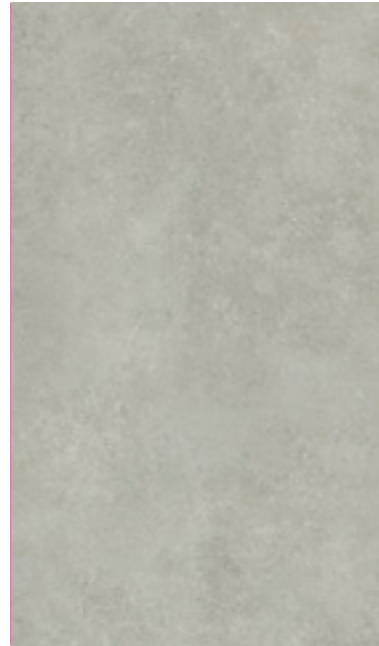
Pavimento

Timeless and impactful, our weathered concretes come in warm hues with a deceptively soft texture.

457.2mm x 914.4mm
(18.0" x 36.0")



Pavimento Crema **LM40**



Pavimento Bianco **LM42**

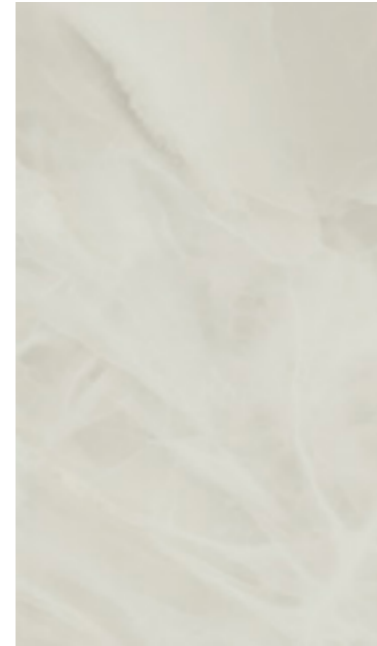


Pavimento Grigio **LM41**

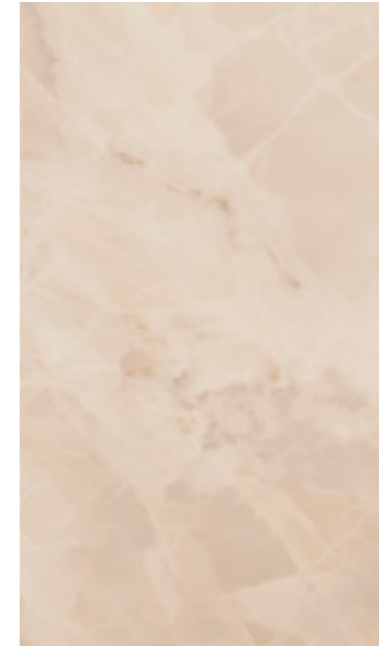
Onyx

A luxurious material rarely seen in flooring due to its fragile nature. We've replicated its delicate, translucent quality to create a design that pushes boundaries.

457.2mm x 914.4mm
(18.0" x 36.0")



Pearl Onyx **LM35**



Rose Onyx **LM36**



Black Onyx **LM34**

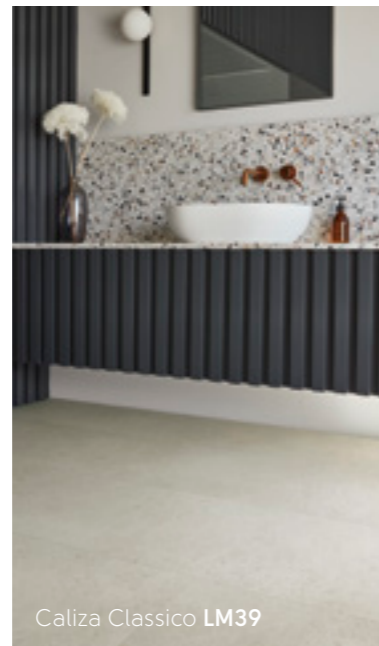
Spanish Limestone

Commonly known as Crema Capri, this Valencian stone is esteemed for its clean, sleek look.

457.2mm x 914.4mm
(18.0" x 36.0")



Caliza Classico **LM39**

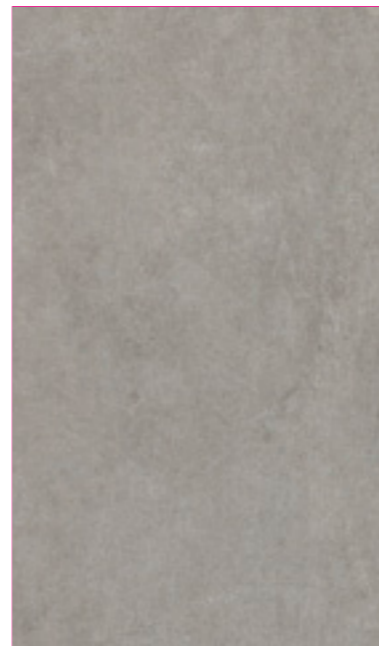


Caliza Classico **LM39**

Concrete

A contemporary poured concrete finish.

457.2mm x 609.6mm
(18.0" x 24.0")



Cambric Stone **LM46**

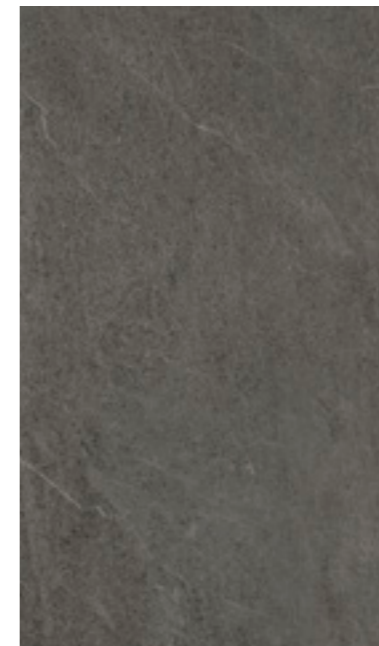
Split Quartzite

Sourced only from a single quarry in the alps, this quartzite is rare and expensive. We've replicated its natural beauty, showcasing unique fissures, veins, and speckles.

457.2mm x 609.6mm
(18.0" x 24.0")



Brenner Quartzite **LM47**



Verona Quartzite **LM48**



Lago Quartzite **LM49**

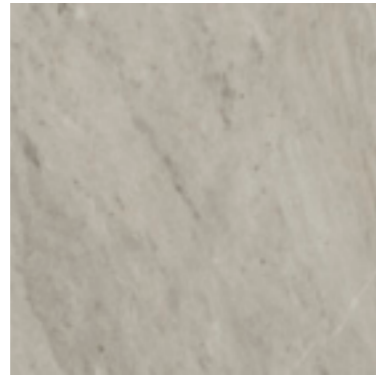
Greek Marble

Adored for its soft sheen and interesting veining, this marble has been inspired by the rare and valuable Rhino Thassos, used in sculptures and temples.

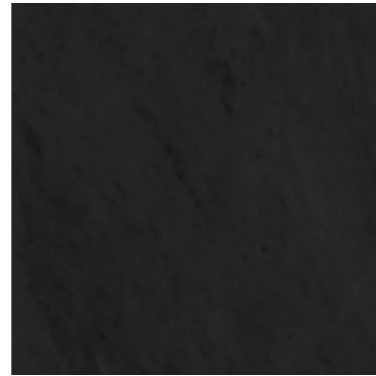
457.2mm x 457.2mm
(18.0" x 18.0")



Doric Marble **LM32**



Ionic Marble **LM30**



Corinthian Marble **LM31**

Calacatta Marble

The most coveted and scarce marble varieties features distinctive grey and gold veining from an ancient Italian quarry.

457.2mm x 914.4mm
(18.0" x 36.0")



Calacatta d'Oro **LM33**



Champagne Travertino **LM38**



Silk Travertino **LM37**

Travertino Georgette

Inspired by a first-grade Travertine formed near hot springs, featuring tight, fine veins, creating a soft linear appearance.

Ceppo di Gre

Quarried in Lake Iseo, Italy, ceppo (meaning 'rock with pebbles') forms from broken up stones to create a naturally occurring terrazzo.

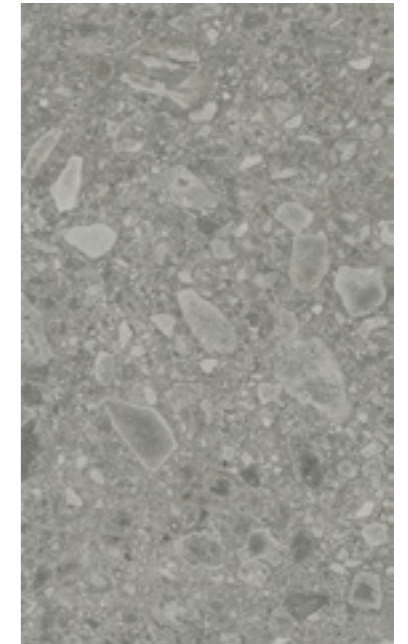
457.2mm x 914.4mm
(18.0" x 36.0")



Sabbia Ceppo **LM44**



Brezza Ceppo **LM43**

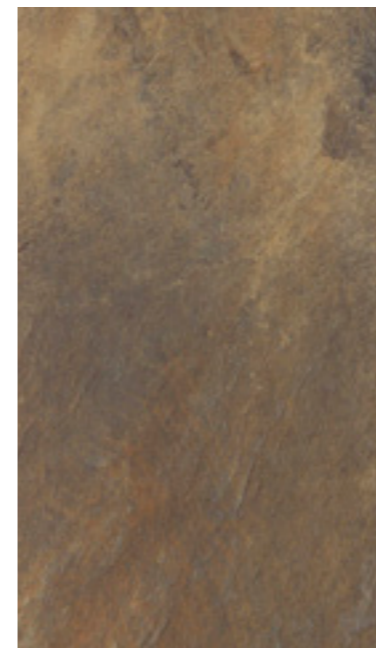


Naturale Ceppo **LM45**

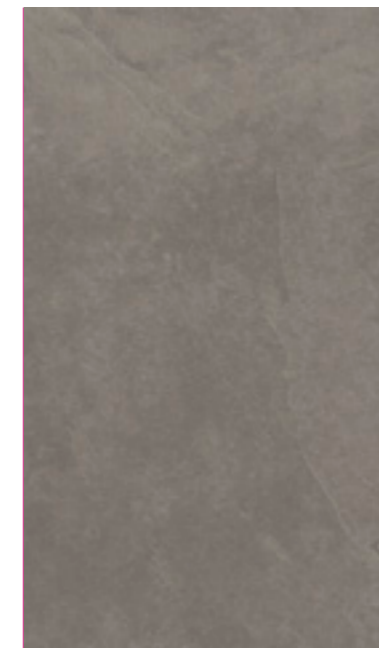
Slate

Our Australian and Welsh slates ensure that a high-grade natural look can be achieved without the large levels of maintenance and risk of cracks and staining.

457.2mm x 609.6mm
(18.0" x 24.0")



Melbourne Slate **LM05**



Corris Slate **LM22**



Canberra Slate **LM06**

TECHNICAL SPECIFICATION

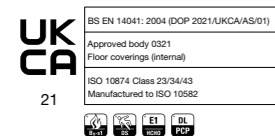
	Standard	Result
Size	EN ISO 24342	See individual swatches overleaf for details
Thickness	EN ISO 24346	3.0 mm
Wear layer	EN ISO 24340	0.7 mm
Surface treatment		K-Guard+® PU coating
Guarantee ¹	Light industrial Commercial Residential	20 years 20 years Lifetime guarantee
Bevelled edge		Standard
Mass per unit area	EN ISO 23997	5015 g/m ²
Standards	EN 649 / EN ISO 10582	Pass
Classification	EN 685 / EN ISO 10874: Light industrial Commercial Domestic	43: Light industrial heavy 34: Commercial very heavy 23: Domestic heavy
Reaction to fire	EN 13501-1	B _{fl} -s1
Staining resistance	EN ISO 26987 / EN 423	Excellent
Abrasion resistance	EN 649 EN ISO 10582	Group T Type 1
Flexibility	EN ISO 24344	Pass
Dimensional stability	EN 434/EN ISO 23999	Pass (≤0.25%)
Light fastness	EN ISO 105-B02	Pass (≥6)
Acoustic impact noise reduction	EN ISO 717-2 / EN ISO 140-8	ΔL _w = 2 dB
Electrical behaviour body voltage	EN 1815	Pass
Indentation - residual	EN 433 / EN ISO 24343-1	Pass (≤0.1 mm)
Castor chair continuous use	EN 425 / EN ISO 4918	Pass
Thermal resistance	ISO 8302	0.0147 m ² K/W Suitable for underfloor heating. Max 27°C
Slip resistance ²	EN 13893 DIN 51130	DS Scan QR code below to view full technical data
Adhesive	Karndean Universal Silane Pressure Sensitive	Yes Yes Yes
Environmental	Indoor Air Comfort Floorscore SCS-EC10.3-2014 v4.0 Environmental Product Declaration NSF/ANSI 332 ISO 14001 / ISO 9001	Gold certification; Compliant low emitting VOC emissions. Indoor air quality certified; Compliant low emitting VOC emissions. External third-party verified Type III EPD. Sustainability Assessment for Resilient Floor Coverings; Conformant product. Manufactured to quality and environment management systems standard.
Recycling		Suitable
Phthalate free		Yes

¹ Subject to terms. Please see our website.

² Slip resistance is measured on freestanding ex-factory product. Slip resistance can be affected by many factors, including but not limited to; product installation and underlayment, surface contamination, use, wear and how the product is maintained. Textural variation along the surface of the product can affect nominal values.



Uniclass 2015	
Pr_35_57_7L_68	
CI/SFB	
(43)	T



Scan here to view full Art Select technical data sheets



Art Select

GLUEDOWN

3mm | 0.7mm

Karndean 



[karndeancommercial.com](https://www.karndeancommercial.com)

Karndean Designflooring, Crab Apple Way,
Vale Park, Evesham, Worcestershire, WR11 1GP

 **Karndean**
Designflooring

Karndean Designflooring - Commercial

Call: 01386 820100

Email: commercial@karndean.co.uk

For ROI call: 01 6569887

KD8245UK | COMASPRES2