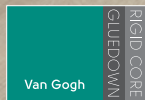




Karndean
Designflooring

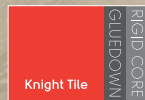
SEE FLOORING

differently



Van Gogh

RIGID CORE
GLUEDOWN



Knight Tile

RIGID CORE
GLUEDOWN

Dual Format

A misty, mountainous landscape with a river flowing through a forest of evergreen trees. The scene is captured in a soft, hazy light, with the mountains in the background appearing as a series of layered, misty ridges. The foreground shows a river with white water rapids, surrounded by dark, dense evergreen trees. The overall mood is serene and natural.

At Karndean we
see flooring differently...

We travel the world in our quest to bring you exceptional floors that inspire and delight. From the ancient forests of Europe, to the remote Australian outback and beyond, we seek out expressive and intriguing forms in the natural world to influence our unique floor designs.

By combining these original features with cutting edge design, we create simply beautiful floors that bring your vision to life.



Contents

Why Karndean?	2
The design you want in the format you need	6
Laying patterns	7
Sector applications	4
Choose your design	8
Where we sourced our inspiration	10
Van Gogh	14
Knight Tile	30
Our other ranges at a glance	46
Resources and further information	52
Biophilia	53
Environmental	54
Transferable purchase warranty	55
Technical datasheets, installation guidelines & BIMstore files	68
Visit us online	57

Why Karndean?

All the benefits of Karndean Designflooring...

From large commercial environments to residential projects, at Karndean Designflooring, our vast range of products offer the essential benefits that make our luxury vinyl tiles and planks the perfect choice for any flooring space.



Realistic wood and stone designs

Inspired by nature, our products are designed in-house and realistically replicate the look and feel of real wood and stone materials.



Warranty

Karndean floors are backed by our residential lifetime* and 10-15 year commercial warranties.



Easy to clean and look after

A sweep and mop with Karndean Clean is all you need to keep your Karndean floor looking great.



K-Guard+®

We use K-Guard+® surface technology for scuff and stain resistance ensuring there is no need to apply an additional surface treatment following installation.



Hygienic

Unlike carpets, our floors don't hold dust, dirt, pollen or other allergens.



Compatible with underfloor heating

For added warmth, our flooring is perfectly suitable for underfloor heating systems up to 27°C.



Kid friendly

Karndean floors offer children a safe and comfortable space to play, and parents a durable, easy-to-clean surface.



Pet friendly

From muddy paw prints to household accidents and anything in-between, Karndean's low-maintenance floors are designed with pets in mind.



Environmentally friendly

All Karndean floors are 100% recyclable and environmentally friendly.

* Residential lifetime 35 year warranty



Waterproof

Karndean's waterproof floors stand up to spills of all sizes and won't swell, crack or warp when wet.



Durable

Compared to other flooring alternatives, Karndean gives you the look and feel of natural products but with the durability and resilience of luxury vinyl.



Comfortable underfoot

Our products are softer and warmer underfoot than natural wood and stone flooring.



Quiet compared to other hard floors

Karndean is quieter underfoot compared to most hard flooring alternatives.



Resists indentation

All Karndean floors stand up to the impact of day to day life.

Sector applications



Retail

Whether specifying flooring for a small boutique or a superstore, the great designs and flexible laying options of our dual format floors really help create and maintain an ambiance in which customers will want to spend.



Misty Grey Oak VGW112T

Social Housing

Flexibility is at the heart of community living. Our dual format portfolio echoes this with a wide range of designs available in both gluedown and rigid core format, each with their own unique features. Specifiers will appreciate the flexibility to select a wood or stone design in a format that suits their social housing project needs.



French Oak VGW85T | SCB-VGW85T

Education

Stylish, durable and low maintenance flooring helps you to create a safe and inspiring educational environment in which students can learn and flourish. Our dual format floors are a practical and resilient choice for universities, colleges, schools and community centres.



Tranquil Oak VGW135T | SCB-VGW135T

Offices

Choosing dual format for your client's board room, reception area or open plan office helps create a stylish and inspiring working environment. What's more, your facility managers will be delighted with Karndean's durability, ease of maintenance and BRE Global Green Guide rating.



Shadow Studio Oak KP150-7 | SCB-KP150

Multi-Res Buildings

Our rigid core floors feature acoustic properties that reduces noise transfer and therefore do not require a separate acoustic underlay, reducing installation time as well as cost which makes them perfect for multi-residential projects.



Health & Aged Care

Dual format is ideal for busy healthcare environments where cleanliness, ease of installation and maintenance are of paramount importance. Gluedown laying patterns can also be easily zoned, facilitating patient flow and demarcation of different areas.



House Build

With highly realistic designs and quick installation, and all the practical benefits of luxury vinyl in a busy family home environment, our dual format floors are the perfect choice for homebuilders and contractors alike with the flexibility to choose the design you want, in the format your project needs.



Leisure & Hospitality

Karndean Designflooring is a well established and proven choice for the demands of hotels, bars, restaurants, tourist attractions and leisure facilities. Faithful reproduction of natural flooring materials comes without the inherent disadvantages of the natural material providing an easy to maintain flooring solution.



The design you want in the format you need

We offer our beautiful Van Gogh and Knight Tile designs in dual format.

As these are available in both gluedown or rigid core, your clients can enjoy the design they want in the format most suitable for the project needs.



Gluedown

With our gluedown ranges you have complete control over the look of your floor, from the lay pattern to the incorporation of our design strips and borders.



Individually replaceable



Laying possibilities



No expansion gap required



Individual, glued down planks and tiles



Rigid core

Our rigid core hybrid ranges feature a click-locking system that allows them to be installed over most existing hard floors, without the need for adhesive.



Click-locking mechanism



Reduces noise transfer



Quick and easy to install



Installs over most existing hard floors



Urban Spotted Gum **KP141-7**

Design capabilities: Herringbone pattern can only be achieved using gluedown format



River Spotted Gum **SCB-VGW131T**

Design capabilities: Straight lay



Choose your format

Gluedown

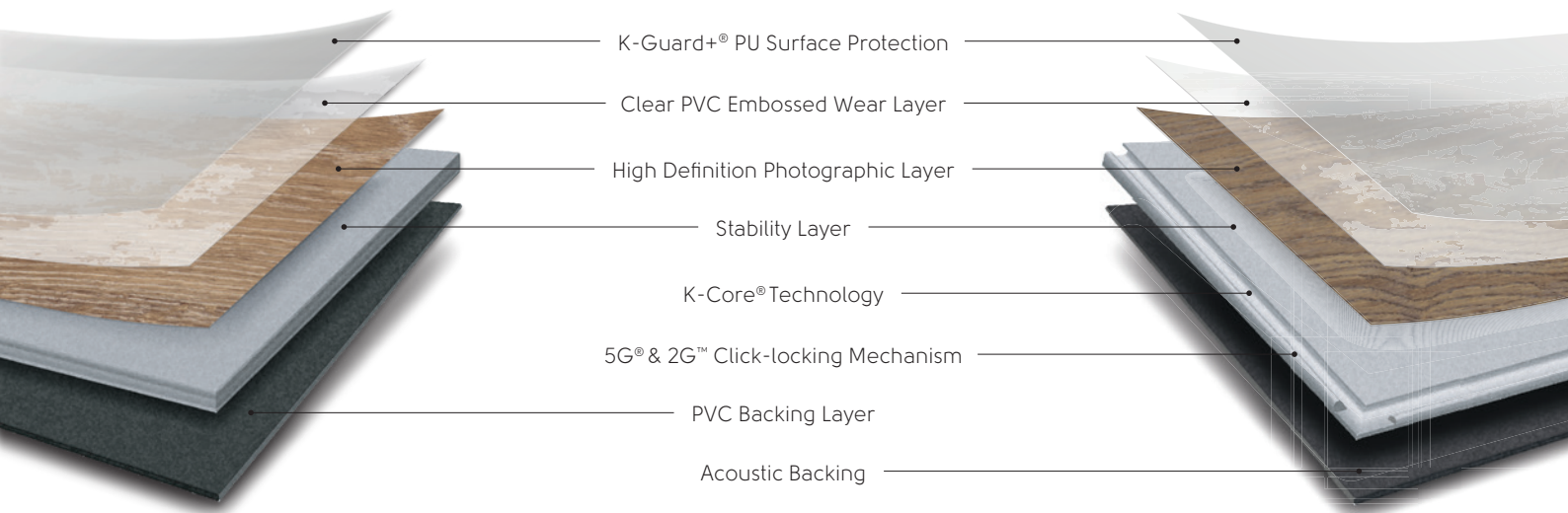
Why choose a gluedown floor?

- **No expansion gap required:** Can be fitted hard up against walls and fixtures with no need for accessories to cover the gap.
- **Personalisation:** With our gluedown ranges, you have complete control over the look of your floor, from the lay pattern to the incorporation of our design strips and borders.
- **Glued down:** Planks and tiles are permanently secured with Mega Bond glue to the subfloor.

Rigid core

Why choose a rigid core floor?

- **Installs over existing hard floors:** Rigid core can be installed over most existing hard floor coverings.
- **Acoustic qualities:** The premium, pre-attached acoustic foam backing reduces noise transfer to rooms below, making it perfect for upstairs bedrooms, playrooms or attic/loft conversions.
- **Quick and easy to install:** Click-locking systems allow the installer to quickly drop and lock planks together, meaning less upheaval and disruption to everyday life.

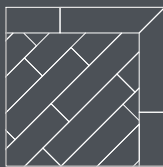


Gluedown wood laying pattern ideas

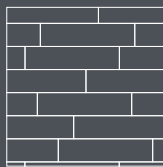
Herringbone



Diagonal with border

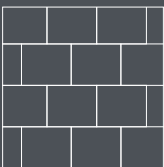


Staggered

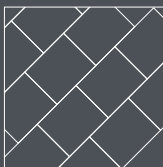


Gluedown stone laying pattern ideas

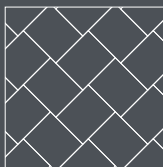
Brick lay



Diagonal

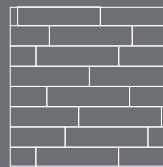


Herringbone

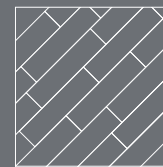


Rigid core wood laying pattern ideas

Staggered



Diagonal

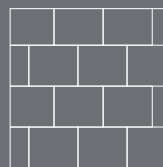


Striped (2-colour)

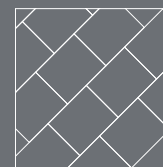


Rigid core stone laying pattern ideas

Brick lay



Diagonal



Striped (2-colour)



Choose your design



Van Gogh Wood

Our collection of Van Gogh woods captures the look and feel of real timber in a variety of colours and designs from traditional rustic to cool contemporary. The colour range in the Van Gogh collection offers a broad variety.

1219.2mm x 177.8mm (48.0" x 7.0") | 1220.0mm x 180.0mm (48.03" x 7.09")



■ Blush Oak
VGW107T | SCB-VGW107T



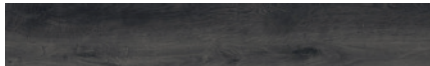
■ Nocturne
VGW134T | SCB-VGW134T



■ Eastern Blackbutt
VGW130T | SCB-VGW130T



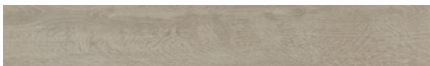
■ Light Distressed Oak
VGW111T | SCB-VGW111T



■ Ebony
VGW89T | SCB-VGW89T



■ French Oak
VGW85T | SCB-VGW85T



■ Greige Oak
VGW110T | SCB-VGW110T



■ Millstone Sycamore
VGW133T | SCB-VGW133T



■ River Spotted Gum
VGW131T* | SCB-VGW131T*



■ Misty Grey Oak
VGW112T | SCB-VGW112T



■ Tranquil Oak
VGW135T | SCB-VGW135T



■ Northern Spotted Gum
VGW103T* | SCB-VGW103T*



■ Country Oak
VGW81T | SCB-VGW81T



■ Birch
VGW84T | SCB-VGW84T



■ Classic Oak
VGW86T | SCB-VGW86T



■ Distressed Oak
VGW82T | SCB-VGW82T



■ Natural Maple
VGW127T | SCB-VGW127T



■ Marron Elm
VGW132T | SCB-VGW132T



■ Smoked Maple
VGW128T | SCB-VGW128T



■ Washed Blackbutt
VGW129T | SCB-VGW129T

GLUEDOWN **Thickness:** 3.0mm **Wear layer:** 0.5mm **Bevel:** Micro **Box quantity:** 3.252m² / 15 planks

RIGID CORE **Thickness:** 5.5mm **Wear layer:** 0.5mm **Bevel:** Micro **Box quantity:** 2.196m² / 10 planks



Inspired by Australian woods.

*As a feature of the design, these products incorporate a high variation between individual planks.



Knight Tile Wood

Every plank in the Knight Tile wood collection has been designed to reflect the authentic grain detail and intrinsic characteristics of natural timbers.

1219.2mm x 177.8mm (48.0" x 7.0") | 1220.0mm x 180.0mm (48.03" x 7.09")



■ White Painted Oak
KPI05-7 | SCB-KPI05



■ Nordic Limed Oak
KPI53-7 | SCB-KPI53



■ Pale Limed Oak
KP94-7* | SCB-KP94*



■ Grey Limed Oak
KPI38-7 | SCB-KPI38



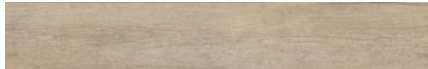
■ Coastal Blackbutt
KPI57-7 | SCB-KPI57



■ Rose Washed Oak
KP95-7* | SCB-KP95*



■ Lime Washed Oak
KP99-7* | SCB-KP99*



■ Coastline Oak
KPI47-7 | SCB-KPI47



■ Classic Spotted Gum
KPI49-7 | SCB-KPI49



■ Light Worn Oak
KPI04-7 | SCB-KPI04



■ Washed Character Oak
KPI44-7 | SCB-KPI44



■ Traditional Character Oak
KPI46-7 | SCB-KPI46



■ Urban Spotted Gum
KPI41-7 | SCB-KPI41



■ Blond Character Oak
KPI43-7 | SCB-KPI43



■ Mid Limed Oak
KP96-7* | SCB-KP96*



■ Shadow Studio Oak
KPI50-7 | SCB-KPI50

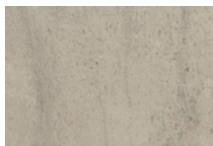
GLUEDOWN	Thickness: 2.0mm	Wear layer: 0.3mm	Bevel: No	Box quantity: 4.335m ² / 20 planks
RIGID CORE	Thickness: 4.5mm	Wear layer: 0.3mm	Bevel: No	Box quantity: 3.074m ² / 14 planks



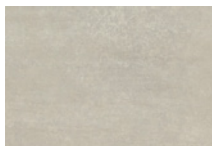
Knight Tile Stone

The Knight Tile stone collection provides a choice of six on-trend flooring designs. Just like our wood collection, these beautiful tiles have been inspired by natural materials. These versatile choices feature a lightly textured surface that enhances their authentic appearance.

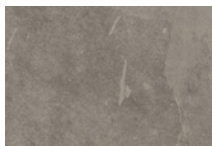
304.8mm x 457.2mm (12.0" x 18.0") | 304.8mm x 457.2mm (12.0" x 18.0")



■ Honed Pebble Slate
ST20 | SCB-ST20-18



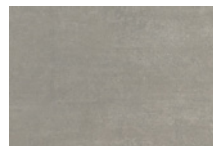
■ Dove Grey Concrete
ST21 | SCB-ST21-18



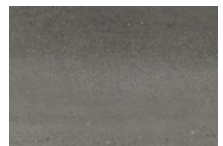
■ Grey Riven Slate
ST16 | SCB-ST16-18



■ Honed Oyster Slate
ST17 | SCB-ST17-18



■ Smoked Concrete
ST22 | SCB-ST22-18



■ Honed Charcoal Slate
ST19 | SCB-ST19-18

GLUEDOWN	Thickness: 2.0mm	Wear layer: 0.3mm	Bevel: No	Box quantity: 3.345m ² / 24 tiles
RIGID CORE	Thickness: 4.5mm	Wear layer: 0.3mm	Bevel: No	Box quantity: 2.787m ² / 20 tiles



Inspired by Australian woods.

*As a feature of the design, these products incorporate a high variation between individual planks.

Where we sourced our inspiration

For decades, Karndean Designflooring has led the way in durable, luxury vinyl flooring. Our designers draw inspiration from the natural world, perfecting and curating our ranges so each one is as unique as you and your space. Innovative technology and quality materials ensure you own a beautiful floor true to the natural material that inspired it.



Spotted Gum

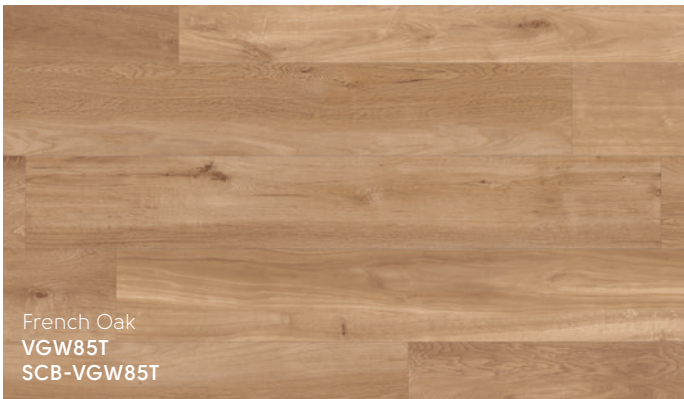
The Spotted Gum tree flourishes in coastal areas along the eastern seaboard of Australia, ranging from the mountains of the Great Dividing Range to the sunshine coast of Queensland. Large amounts of sapwood can be seen within the boards and this adds to the blend of features that make the product so distinctive. Even when coloured, the sap creates a tonal plank that will work in all interiors.



River Spotted Gum
VGW131T
SCB-VGW131T

Oak

These boards were hand selected as a trusted raw material and canvas to work with. The objective was to create an even, non-tonal visual across the floor, while retaining the much-loved characteristics of the natural, prime timber. The light speckling seen within the tight grains occurs due to the rapid dehydration of the boards once felled. We then hand applied coloured oils to produce on-trend colours.

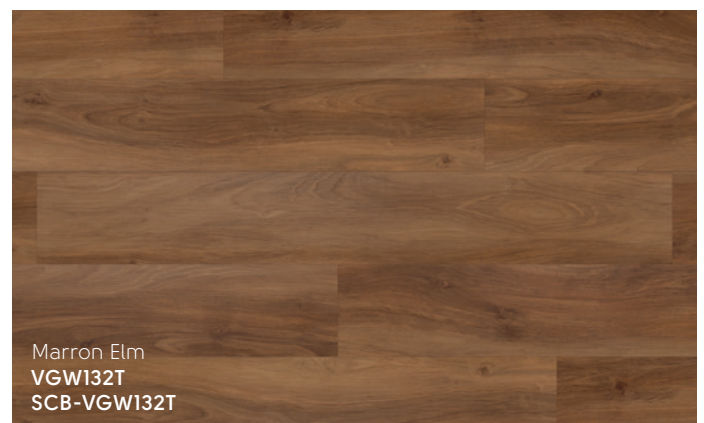
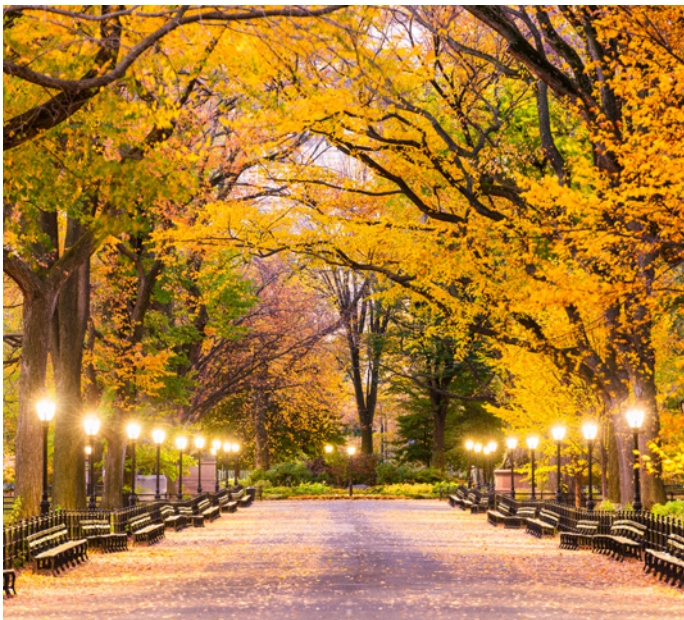


French Oak
VGW85T
SCB-VGW85T



Elm

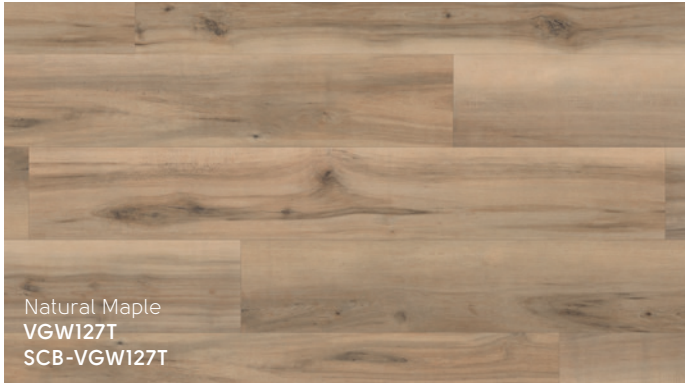
Elm trees are native primarily to north temperate areas and has been admired for centuries for their height and lush foliage. Elm wood has long been used in the construction of furniture, boats and buildings because of its natural durability. Known for its exquisite grain pattern and light to medium reddish-brown and sapwood, its grain is smooth and features a finely waved pattern.



Marron Elm
VGW132T
SCB-VGW132T

Maple

Widely distributed in the northern hemisphere and heavily concentrated in China. Maples are one of the most popular ornamental trees for planting along streets and in parks due to their unique beauty with many displaying striking autumn colour changes. In its natural form, Maple wood is attractively creamy and warm with a pinkish tinge. The timber is fine-textured and generally straight-grained appearance.



Birch

Birch is right at home across the cooler parts of North America, Europe and Asia. Well known for their smooth, light grey-white bark which usually peels horizontally in thin sheets, especially on younger trees. Birch wood has good strength properties, is flexible and tough but not particularly hard, making the wood easy to work with. The natural wood has a yellow-white colouring and a gentle wavy grain.



Blackbutt

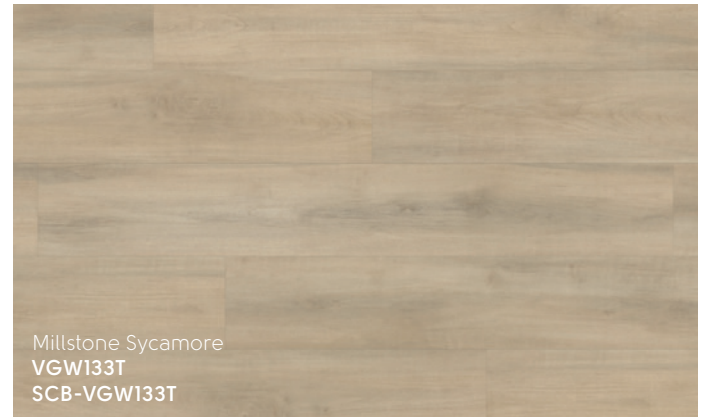
A quintessential Australian hardwood that takes its name from the lower half of the tree's trunk which is blackened by the fierce forest fires that both destroy, and then renew. These boards were sourced from the very north of New South Wales where thick forests merge with the beautiful coastline. Great care was taken to retain the oozing sap lines that add to the distinctive linear grain and bleed into the timber.





Sycamore

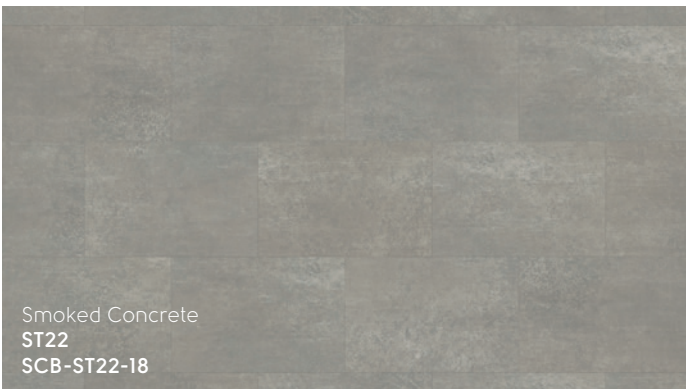
European Sycamore belongs to the acer family, along with maple, and features many of the same characteristics. The most striking feature of the tree is the bark pattern comprised of warm-grey outer bark that peels off in large patches to reveal the wood within. The wood has a fine, close texture and in its natural form tends to be a light, almost white colour, making it an ideal colour carrier.



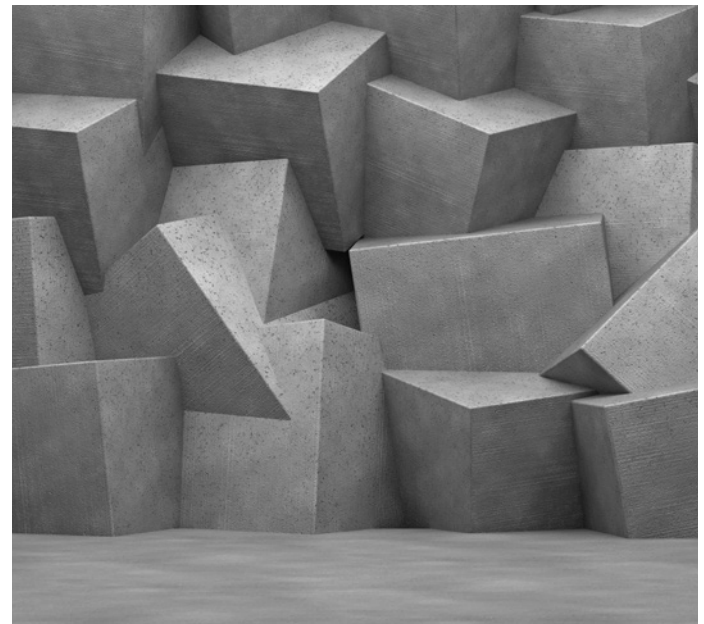
Millstone Sycamore
VGW133T
SCB-VGW133T

Concrete

Our designers experimented with different colouring techniques to transform the classic, neutral design into an incredibly versatile, contemporary set of concrete look tiles. Each colour option highlights different features contained within the design, and the tonal shift within the individual tiles creates a visually appealing palette. The result is an attractive product that adds a new warmth and elegance to a solid industrial material.



Smoked Concrete
ST22
SCB-ST22-18



Slate

The design team visited quarries in the Lake District, England, and sourced volcanic slate by hand, selecting pieces of this 300-million-year-old stone. Each piece was individually unique in character, and the detail of the linear markings and fractured features of the stones pair well with an active family space.



Grey River Slate
ST16
SCB-ST16-18



Van Gogh

Enduring Australian style

[CLICK HERE](#)



Click here to read
more about our
Van Gogh range

From classic European species such as oak, elm, maple and birch, to quintessential Australian timbers including blackbutt and spotted gum, the Van Gogh Range celebrates the intrinsic character and rich diversity of colour, tone and texture of the world's most beautiful timbers.



Blush Oak VGW107T | SCB-VGW107T



Tranquil Oak VGW135T | SCB-VGW135T



Light Distressed Oak VGW111T | SCB-VGW111T



Greige Oak VGW110T | SCB-VGW110T

[CLICK HERE](#)



Click here to read about our **Lighten Up** trend.

Get ready for bold, bright colour and new adventures in styling that help set the scene for more optimistic, confident and joyful times ahead.

Millstone Sycamore VGW133T | SCB-VGW133T



Birch VGW84T | SCB-VGW84T



Lifetime warranty

Our floors are backed by a lifetime residential warranty and 10 - 20 year commercial warranties



Washed Blackbutt VGW129T | SCB-VGW129T





Eastern Blackbutt VGW130T | SCB-VGW130T



French Oak VGW85T | SCB-VGW85T



Natural Maple VGW127T | SCB-VGW127T

[CLICK HERE](#)



Click here to read about our **Smooth Operator** trend.

While drawing heavily on a retro aesthetic, Smooth Operator is as fresh as tomorrow.

River Spotted Gum VGW131T | SCB-VGW131T





Country Oak VGW81T | SCB-VGW81T



Distressed Oak VGW82T | SCB-VGW82T



Northern Spotted Gum VGW103T | SCB-VGW103T





Herringbone laying pattern is only achievable with gluedown ranges.

Misty Grey Oak VGW112T | SCB-VGW112T



Nocturne Oak VGW134T | SCB-VGW134T



Classic Oak VGW86T | SCB-VGW86T



Marron Elm VGW132T | SCB-VGW132T



Smoked Maple VGW128T | SCB-VGW128T



Ebony VGW89T | SCB-VGW89T



Knight Tile

Effortlessly stylish

[CLICK HERE](#)



Click here to read
more about our
Knight Tile range

Our versatile Knight Tile collection of woods and stone includes a wide range of tones and styles suitable for residential and light commercial installations. Each plank has been designed to reflect the grain details of natural timber while each tile captures the essence of beautiful natural stone. The collection covers a wide variety of interior styles.



White Painted Oak KP105-7 | SCB-KP105



Nordic Limed Oak KP153-7 | SCB-KP153



Coastal Blackbutt KP157-7 | SCB-KP157

CLICK HERE



Click here to read about our **Timeworn Treasures** trend.

An antidote to the overstimulation of modern life and with no compromise to comfort or style, Timeworn Treasures celebrates the imperfections and character of natural materials.



Coastline Oak KP147-7 | SCB-KP147



Herringbone laying pattern is only achievable with gluedown ranges.

Urban Spotted Gum KPI41-7 | SCB-KPI41



Grey Limed Oak KPI38-7 | SCB-KPI38



Blond Character Oak KP143-7 | SCB-KP143



Washed Character Oak KP144-7 | SCB-KP144



HIGH VARIATION
is a feature of this design

Herringbone laying pattern is only achievable with gluedown ranges.

Mid Limed Oak KP96-7 | SCB-KP96



HIGH VARIATION
is a feature of this design

Rose Washed Oak KP95-7 | SCB-KP95



HIGH
VARIATION
is a feature of this design

Pale Limed Oak KP94-7 | SCB-KP94



Light Worn Oak KP104-7 | SCB-KP104



Classic Spotted Gum KP149-7 | SCB-KP149





Reduces noise transfer

Perfect for spaces where you want to reduce noise levels in the room below.



Traditional Character Oak KPI46-7 | SCB-KPI46



Shadow Studio Oak KPI50-7 | SCB-KPI50



Lime Washed Oak KP99-7 | SCB-KP99

• HIGH VARIATION •
is a feature of this design •

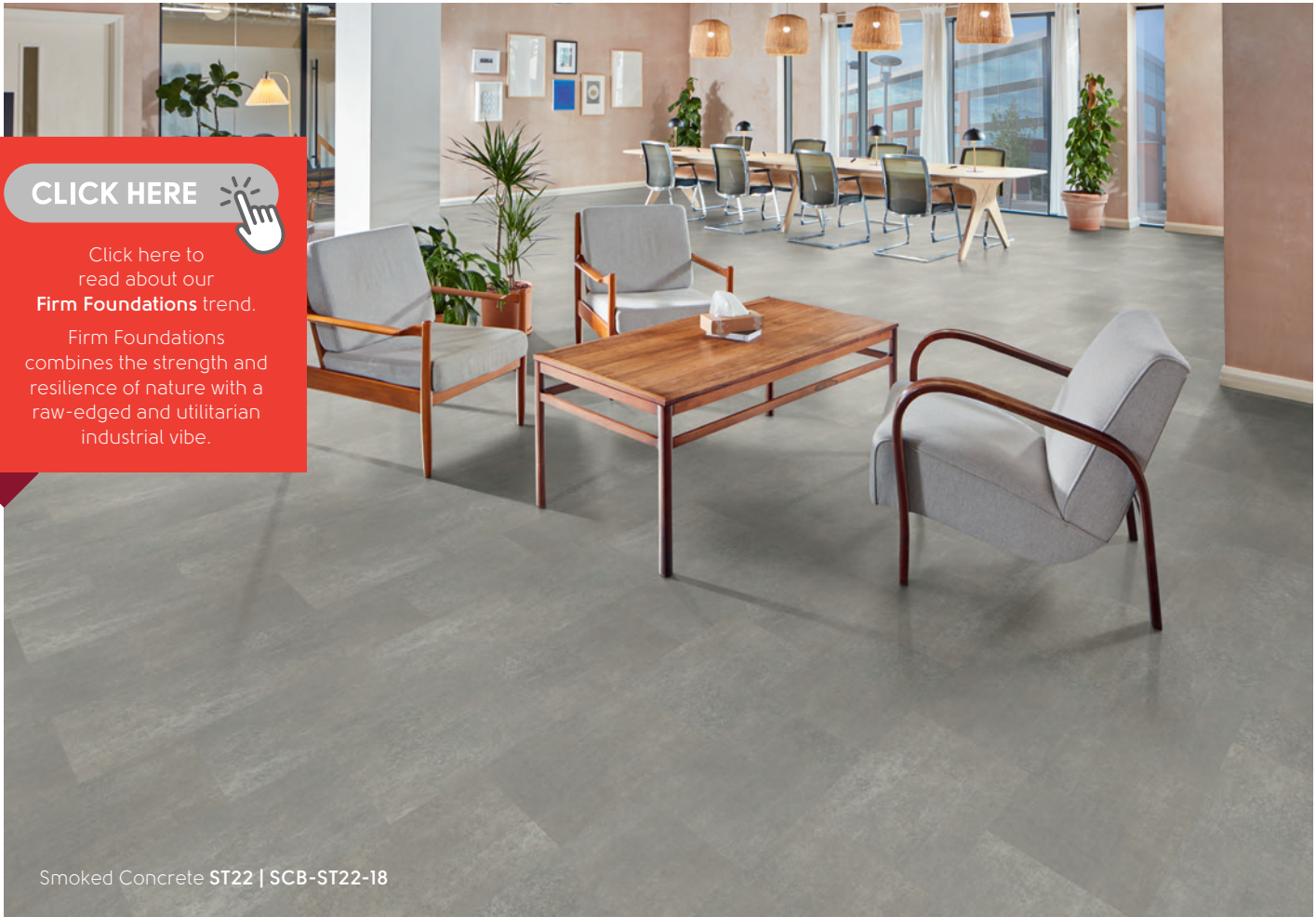


* Design strips are only compatible with gluedown ranges.

Honed Oyster Slate **ST17** with DS12 3mm design strip* | **SCB-ST17-18**



Dove Grey Concrete **ST21** | **SCB-ST21-18**



CLICK HERE



Click here to read about our **Firm Foundations** trend.

Firm Foundations combines the strength and resilience of nature with a raw-edged and utilitarian industrial vibe.

Smoked Concrete ST22 | SCB-ST22-18



Honed Pebble Slate ST20 | SCB-ST20-18



Our other ranges at a glance

We offer natural wood and stone-inspired designs featuring all the intricate details and unique characteristics you'd expect to see in traditional flooring. Carefully designed for authenticity, colours are defined with variable shades and tones, just as they are in natural materials. We have an extensive collection of designs, from soft light to darker tones, paired with attractive emboss detailing, there's sure to be a design to define your project.






We offer three flooring formats

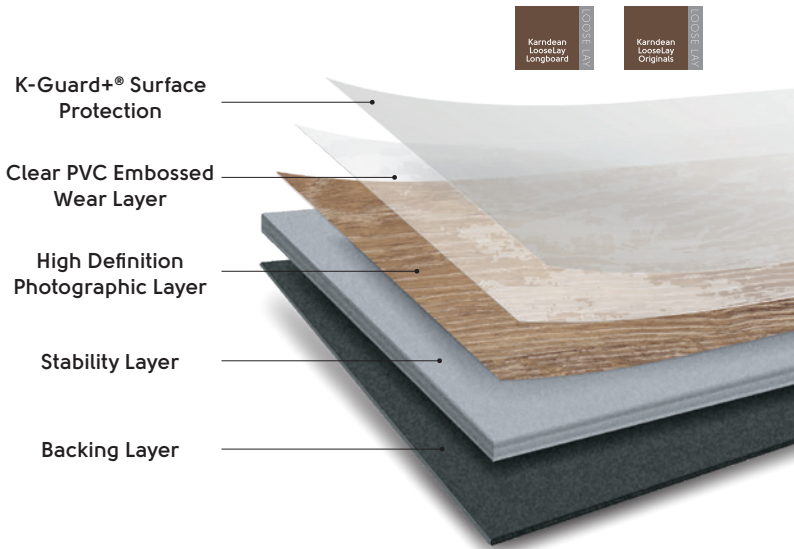
We know that choosing a floor that suits you and your home can be challenging. That's why we offer our beautiful, design-led floors in either loose lay, rigid core or gluedown. So you can enjoy exactly the design you want, in the format you need. Please speak to your installer or retailer to discuss your options.

Loose lay

Choose loose lay when...

- You want to reduce noise transfer, such as in loft conversions or upstairs rooms.
- You want a quick installation.
- You have a completely flat, dry subfloor, prepared by a flooring professional.

-  Individually replaceable
-  K-Wave® friction grip backing
-  Quick and easy to install
-  Laying possibilities
-  Reduces noise transfer

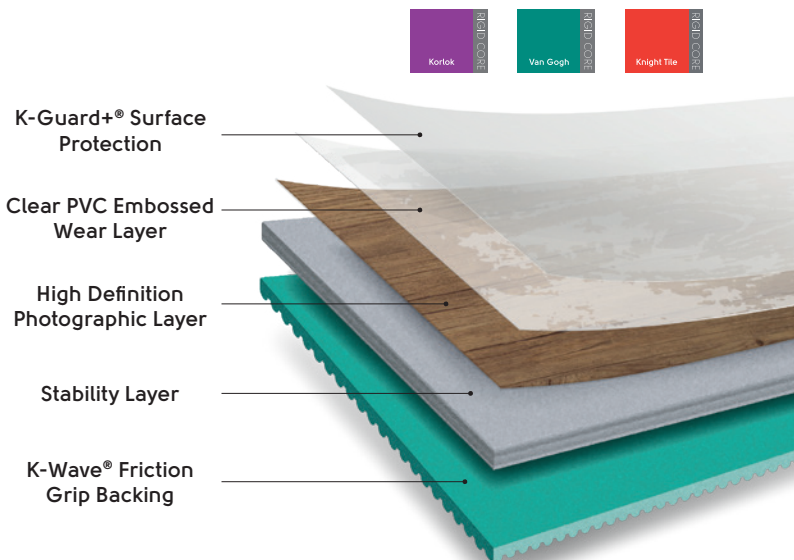


Rigid core

Choose rigid core when...

- You want superior acoustics, such as in loft conversions or upstairs rooms.
- You want a quick installation.
- You want to install over an existing floor such as ceramic tiles or floorboards, or uneven subfloor.

-  Click-locking mechanism
-  Quick and easy to install
-  Reduces noise transfer
-  Installs over most existing hard floors

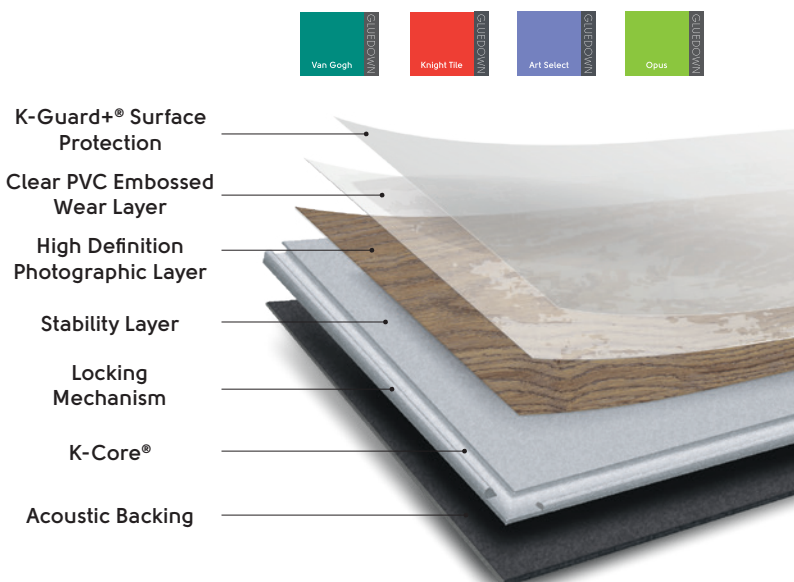


Gluedown

Choose gluedown when...

- You want to create your floor, with different laying patterns, design strips and decorative borders.
- You want to be able to mix stone and wood designs and create a completely bespoke floor.
- You have a completely flat, dry subfloor, prepared by a flooring professional.

-  Individually replaceable
-  Individual, glued down planks and tiles
-  Design capabilities
-  Laying possibilities
-  No expansion gap required





LooseLay Longboard Wood

LooseLay Longboard is a collection of 20 woods featuring unique designs in a 1.5m long format. Featuring native Australian species, the collection offers a contemporary palette that makes the most of its 1.5m length and loose lay format.



Sterling Oak LLP354
White Oak



Lemon Spotted Gum LLP317
Australian Species



Wood 1500.0mm x 250.0mm (59.06" x 9.84")

LOOSE LAY		Thickness: 4.5mm	Wear layer: 0.5mm	Bevel: No	Box quantity: 3.000m ² / 8 planks
-----------	--	-------------------------	--------------------------	------------------	-----------------------------------------------------



LooseLay Originals Wood & Stone

Our LooseLay Originals collection of woods have been inspired by some of the most popular species found in the natural world. Our collection of stones features minimalistic Concrete, luxurious Honed Limestone, and natural Pietra to complement every interior style.



Lampione LLP147
European Oak



Ontario LLT218
Concrete

Wood 1050.0mm x 250.0mm (41.34" x 9.84")

LOOSE LAY		Thickness: 4.5mm	Wear layer: 0.5mm	Bevel: No	Box quantity: 3.150m ² / 12 planks
-----------	--	-------------------------	--------------------------	------------------	------------------------------------------------------

Stone 500.0mm x 610.0mm (19.69" x 24.02")

LOOSE LAY		Thickness: 4.5mm	Wear layer: 0.5mm	Bevel: No	Box quantity: 3.050m ² / 10 tiles
-----------	--	-------------------------	--------------------------	------------------	-----------------------------------------------------

[CLICK HERE](#)



Scan to find out more in our Loose Lay Commercial Brochure

We love developing new ideas and improving on our existing designs which means that sometimes products are withdrawn at short notice. We hate to disappoint and will work with you to find an alternative design.



Inspired by
Australian woods.

*As a feature of the design, these products incorporate a high variation between individual planks.



Korlok Wood & Stone

From the contemporary look of European oak, the Aussie classic Spotted Gum, reclaimed and rustic characteristics of Barnwood and Acacia, to the elegant subtlety of Ash and Butternut, our collection of Korlok woods has a look to suit every interior style. Our Korlok stone palette features tiles inspired by contemporary concrete, smooth and subtle limestone, traditional terrazzo, and elegant marble, perfect for creating a timeless and on-trend backdrop in your home.



Warm Spotted Gum RKP8118



Wood 1420.0 x 225.0mm (55.91" x 8.86")

KORLOK		Thickness: 6.5mm	Wear layer: 0.5mm	Bevel: Micro	Box quantity: 3.195m ² / 10 planks
--------	--	------------------	-------------------	--------------	-----------------------------------------------



Smoke RKT2412

Stone 457.0 x 600.0mm (17.99" x 23.62")

KORLOK		Thickness: 6.5mm	Wear layer: 0.5mm	Bevel: Micro	Box quantity: 2.742m ² / 10 tiles
--------	--	------------------	-------------------	--------------	----------------------------------------------

CLICK HERE



Click here to find out more in our Korlok Brochure

We love developing new ideas and improving on our existing designs which means that sometimes products are withdrawn at short notice. We hate to disappoint and will work with you to find an alternative design. The QR code here will take you to the most updated range information.

Art Select Wood

Through meticulous attention to detail and careful selection of some of the most beautiful and inspiring natural timbers, our Art Select wood collection includes our most intricate designs and realistic embosses.



Hickory Peppercorn **EW02**



Winter Oak **RL04**

Wood Oak Royale 1219.2mm x 177.8mm (48.0" x 7.0")

GLUEDOWN		Thickness: 3.0mm	Wear layer: 0.7mm	Bevel: Standard	Box quantity: 3.252m ² / 15 planks
----------	--	------------------	-------------------	-----------------	-----------------------------------------------

Handcrafted 914.4mm x 152.4mm (36.0" x 6.0")

GLUEDOWN		Thickness: 3.0mm	Wear layer: 0.7mm	Bevel: Standard	Box quantity: 3.345m ² / 24 planks
----------	--	------------------	-------------------	-----------------	-----------------------------------------------

Parquet 228.6mm x 76.2mm (9.0" x 3.0")

GLUEDOWN		Thickness: 3.0mm	Wear layer: 0.7mm	Bevel: Standard	Box quantity: 3.345m ² / 192 planks
----------	--	------------------	-------------------	-----------------	------------------------------------------------

Oak Premier 914.4mm x 152.4mm (36.0" x 6.0")

GLUEDOWN		Thickness: 3.0mm	Wear layer: 0.7mm	Bevel: Standard	Box quantity: 3.345m ² / 24 planks
----------	--	------------------	-------------------	-----------------	-----------------------------------------------

[CLICK HERE](#)



Scan to find out more in our Art Select Brochure

We love developing new ideas and improving on our existing designs which means that sometimes products are withdrawn at short notice. We hate to disappoint and will work with you to find an alternative design.



Opus Wood & Stone

Our Opus wood collection offers a fresh modern feel with some of our largest plank sizes. The contemporary designs in a wide range of colours create a sense of simplicity and space whatever your colour scheme.

The Opus stone collection includes a range of fresh, contemporary stone effects including our largest tile sizes. The simple, smooth surface and range of colours create a clean, modern look to your interior.



Bleached Grey Walnut WP329

Wood 914.4mm x 152.4mm (36.0" x 6.0")

GLUEDOWN		Thickness: 2.5mm	Wear layer: 0.5mm	Bevel: Micro	Box quantity: 3.345m ² / 24 planks
----------	--	------------------	-------------------	--------------	-----------------------------------------------

1219.2mm x 228.6mm (48.0" x 9.0")

GLUEDOWN		Thickness: 2.5mm	Wear layer: 0.5mm	Bevel: Micro	Box quantity: 3.345m ² / 12 planks
----------	--	------------------	-------------------	--------------	-----------------------------------------------



Mico SP211

Stone 457.2mm x 609.6mm (18.0" x 24.0")

GLUEDOWN		Thickness: 2.5mm	Wear layer: 0.5mm	Bevel: Micro	Box quantity: 3.345m ² / 12 tiles
----------	--	------------------	-------------------	--------------	----------------------------------------------

457.2mm x 457.2mm (18.0" x 18.0")

GLUEDOWN		Thickness: 2.5mm	Wear layer: 0.5mm	Bevel: Micro	Box quantity: 3.345m ² / 16 tiles
----------	--	------------------	-------------------	--------------	----------------------------------------------

[CLICK HERE](#)



Scan to find out more in our Opus Brochure

We love developing new ideas and improving on our existing designs which means that sometimes products are withdrawn at short notice. We hate to disappoint and will work with you to find an alternative design.

Biophilia

Reconnecting with nature in the built environment

Biophilia and the part it plays in sustainability to enhance health, performance and wellbeing.

Humans need nature in order to thrive. Yet, to do this sustainably requires resource consumption to be minimised, finding a balance within our ecological systems to ensure the longevity of resources for future use.

An integrated approach that understands and implements the human need for nature within a built space and recognises the need for a balanced resource consumption and environmental preservation, can achieve both health and wellness goals.

Benefits of biophilia in spaces.

- Office:** Research has demonstrated that productivity can be increased by 8%, rates of well-being up by 13% and well as significant increases in creativity.
- Hospitality:** Surveys have suggested that guests are willing to pay 23% more for rooms with views of biophilic elements.
- Education:** The inclusion of nature within education facilities has said to increase rates of learning by up to 20-25% as well as helping to improve test results, concentration levels and attendance. Some research has also suggested that the inclusion of biophilic elements can further reduce the effects of ADHD.
- Healthcare:** Post-operative recovery times have said to be decreased through natural design elements within a hospital and other healthcare facilities, by 8.5% and further reduced pain medication usage by 22%.
- Retail:** The presence of vegetation & landscaping can increase rental rates on retail spaces with customers indicating they were willing to pay 8-12 % more for goods and services.
- Homes:** Can become more calming & restorative, with 7-8% less crime attributed to areas with access to nature and can command an increase of 4-5% in property price.



Shadow Studio Oak KPI150-7 | SCB-KPI150

Environmental

Karndean Designflooring and the environment

At Karndean Designflooring we find inspiration for our products in the beauty of the natural world and feel passionate about bringing this into every product we create. In order to keep our environment protected we do everything we can to continuously improve our manufacturing processes to ensure sustainability whilst delivering best value. We have always aimed to make stylish and durable floors with the lowest possible impact on the environment, and have never had to compromise quality or performance in order to comply with legislation or meet environmental requirements.

Karndean Designflooring is a member of the Green Building Councils of Australia and New Zealand and complies with their requirements under GreenStar. All Karndean products and accessories are manufactured in facilities certified to the ISO 14001 Environmental Management and ISO 9001 Quality Management International Standards. Our approach is based on the use of recycled materials in our floor coverings and ensuring that the finished product is suitable for recycling if required.

What's more...

- All of our packaging is made using recycled material, which we continually review to ensure that it is environmentally friendly and fit for purpose
- We use individual logistical solutions to efficiently and effectively transport our products
- Our storage facilities use high density racking to maximise capacity and minimise impact
- Our offices are introducing innovative energy saving techniques
- We are members of the Green Building Council Australia (GBCA) and Green Building Council New Zealand (NZGBC)
- Our products qualify for eco-points towards GreenStar building projects
- All of our adhesives are water based, solvent-free, have low VOC emissions and are GreenTag certified

GreenStar GreenTag™ certified

The majority of Karndean luxury vinyl ranges are fully certified to Global GreenTag, the third party multi-criteria, consensus based and externally verified Type 1 eco-labelling program. This is one of the largest product sustainability certification systems in Australasia and the only certification mark approved by the Australian Competition and Consumer Commission (ACCC).

GreenTag comprises two certification systems and the majority of Karndean Designflooring luxury vinyl is certified under both.



Click here to find out more about our **Environmental commitment**

LCARate™

The future

Our continued product innovation focuses on reducing our environmental impact and complying with environmental legislation and recognized certifications worldwide. Our aim is to remain the leading supplier of LVT flooring and to have a market-leading environmental record of achievement through the development of sustainable products and processes.



Life Cycle Analysis is for all products and all rating tools that engage LCA with separate output called an Environmental Product Declaration (EPD), which is a summary LCA report used for certain credits in some rating tools for GreenStar.

GreenRate™

GreenRate is a straight Type 1 eco label developed to meet the requirements of specific green building rating tools. It includes indoor environmental air quality: volatile organic compounds compliant (IEQ VOC) and reduced exposure to pollutants. GreenRate is offered in three levels of quality from Level 'C' up to Level 'A' relevant to GreenStar in Australia and New Zealand.

Karndean Designflooring LVT ranges and adhesives are fully certified under GreenStar GreenRate Level 'A', plus under international FloorScore Indoor Air Quality Certification for low emitting VOC's. Also certified to LCARate "silver streamline".

Learn more and download Karndean Designflooring's GreenTag certificates on our website.

Visit karndean.com/eco.

Karndean Designflooring warranty

A Karndean luxury vinyl floor is unique to your project and covered by a transferable warranty, giving you and your clients peace of mind.

Please speak with your Business Manager or download our warranty document for more information.

[CLICK HERE](#)



Click here to find out more about our **Warranty**

Cleaning and maintaining your Karndean floor

Karndean Designflooring is hardwearing and easy to look after. Our enhanced surface treatment helps protect against everyday wear, spills and scuffs. This makes it easier and more environmentally friendly to clean and maintain, giving you peace of mind that your Karndean floor will look great for years to come. We have a dedicated section on the website with videos that explain how best to look after your Karndean floor and covers lots of frequently asked questions from our customers.

[CLICK HERE](#)

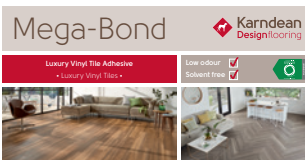


Click here to find out more about **Cleaning and maintaining your Karndean floor**



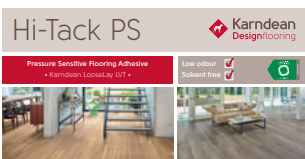
Choosing the right flooring adhesive

We recommend that you use our range of environmentally friendly Karndean Designflooring adhesives that are available for you to order. The type of adhesive required will depend on the application and location of the installation.



Karndean Mega-Bond Adhesive

Karndean Mega-Bond is a non-solvent and low odour adhesive suitable for indoor use. Mega-Bond is used for all Karndean LVT glue backed installations. Apply Mega-Bond using a VI 1.6mm x 1.6mm notched trowel and install into a wet film (do not let the adhesive tack-up). Refer to AS/NZS 1884 for best practice subfloor preparation.



Karndean Hi-Tack PS

Karndean Hi-Tack PS is a pressure sensitive 'peel and release' adhesive used for installing loose lay tiles and planks. Use a VI notched trowel to apply Hi-Tack PS evenly over the subfloor allowing it to dry into a 'clear film' before installation.



Karndean 8000 2-Part Waterproof / High Temperature Adhesive

Karndean's 2-Part Polyurethane is a waterproof, high temperature adhesive for use in circumstances when excessive water puddling or high temperatures are expected. It can also be used for adhesion to non-porous substrates such as steel. When mixing parts 'A' & 'B' together an extreme permanent chemical bond is achieved.

Technical datasheets, installation guidelines & BIMstore files

Please follow the links below to our technical data sheets, installation guidelines and BIMstore files.

Our ranges



CLICK HERE



Click here see our
Technical datasheets

CLICK HERE



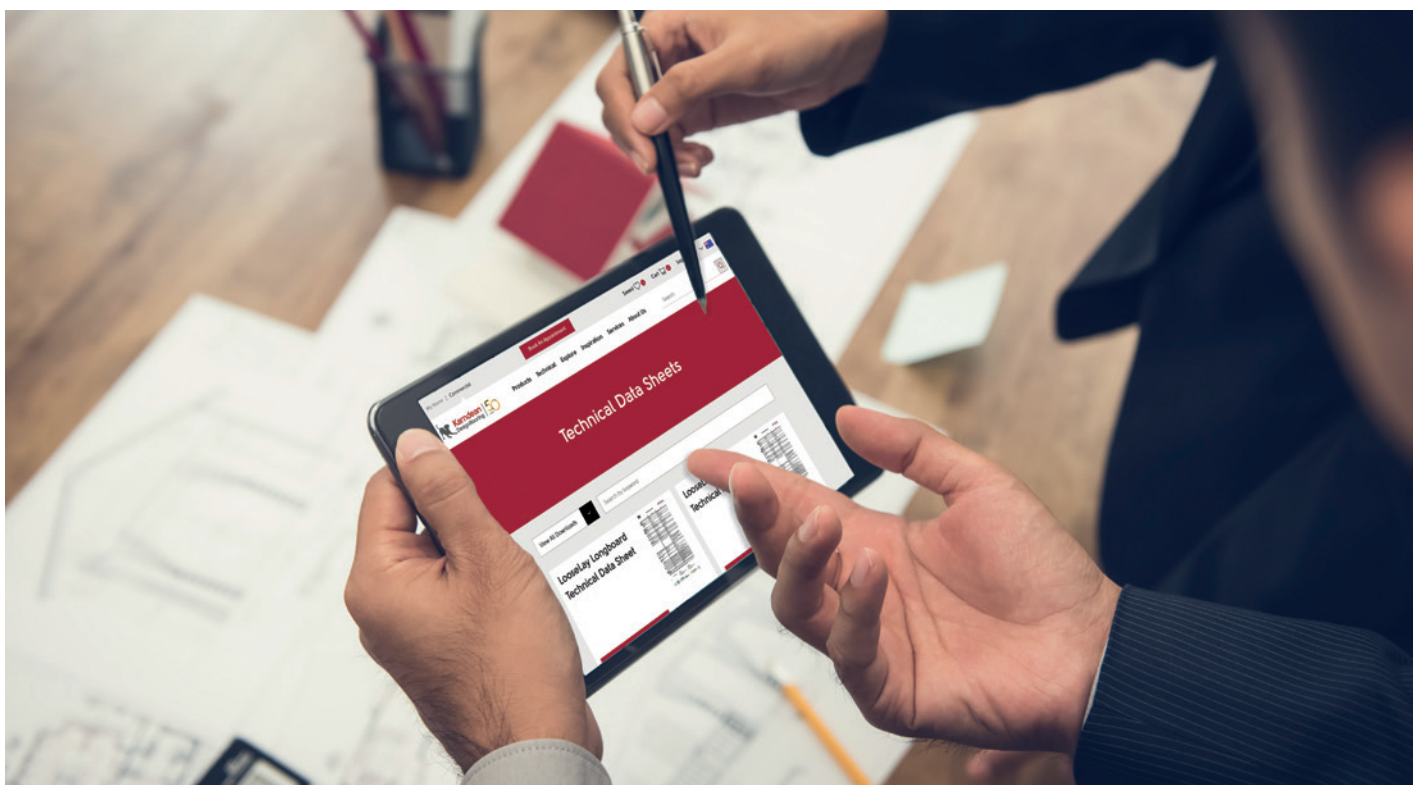
Click here see our
Installation guidelines

bimstore

CLICK HERE



Click here see our
BIMstore files



Visit us online at www.karndean.com, where you can...

Find website support

[CLICK HERE](#) 

The website offers a wealth of inspiration, case studies and design ideas, detailed technical information and a look inside our head office and warehouse. When you are designing floors this is your point of reference for information, samples and practical support.

Website tools include:

Find a retailer

Floorstyle tool

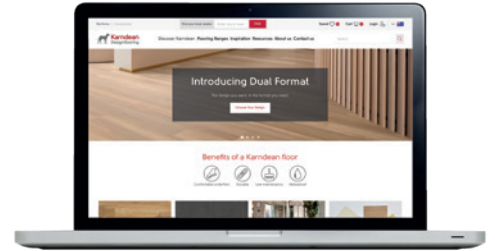
Product selector

Order samples

Downloads

Style Finder

Moodboard Tool



Order samples

[CLICK HERE](#) 

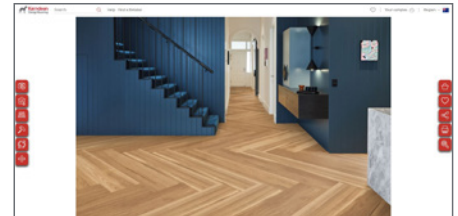
If you need some extra help selecting the best colour for your room, why not order some cutting samples? These are small samples designed to help you pick which product is right for you.



Check out our Digital Specification Library

[CLICK HERE](#) 

We have developed a great tool which allows you to pick a room and see what different floors will look like. It's really easy to use and will allow you to create your perfect Designflooring combination.








Sign up for our e-newsletter

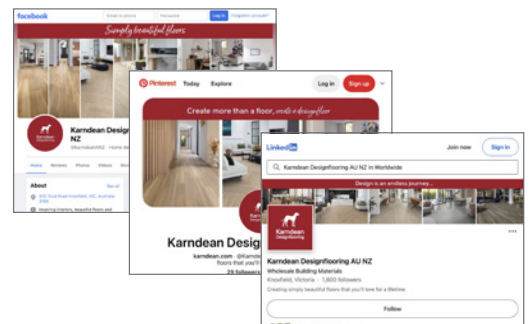
[CLICK HERE](#) 

We'd love to keep in touch with you. To receive our email communications sign up online today.

Keep up-to-date with us

Keep in touch on social media. Share your new floors and reviews with us; we look forward to hearing from you.

-  Like us on Facebook **karndean_anz**
-  Follow us on Instagram **karndean_anz**
-  Join us on LinkedIn **Karndean Designflooring ANZ**
-  Follow our boards on Pinterest **Karndean_anz**
-  Find us on YouTube **KarndeanDesignFloors**





Imagery and Design Reproduction

Photography and print cannot always produce a perfect representation of our products. This includes colour, pattern variation and installation elements used. For this reason we strongly recommend obtaining a product sample and where possible viewing a larger sample in-store. We also recommend visiting our website for information on installation, after care and product selection: www.kardean.com/advice. We love developing new ideas and improving on our existing designs which means that sometimes products are withdrawn at short notice. We hate to disappoint and will work with you to find an alternative design. Please contact Customer Service for more information.

Contact us

Phone: AUS - 1800 331 170* / NZ - 0800 442 101*

Email: customerservice@kardean.com.au
customerservice@kardean.co.nz

Web: www.kardean.com

Address: 835 Stud Road Knoxfield,
Victoria 3180, Australia

*Calls may be recorded for training and quality purposes.

